

See Plan A18 for connection to R. G. Walkers traverse

NORTHERN TERRITORY OF AUSTRALIA

PLAN OF

NT PORTION 499 (PMG MEMORIAL RES) NT PORTION 500 (RESERVE FOR OT LINE) & ACCESS ROAD

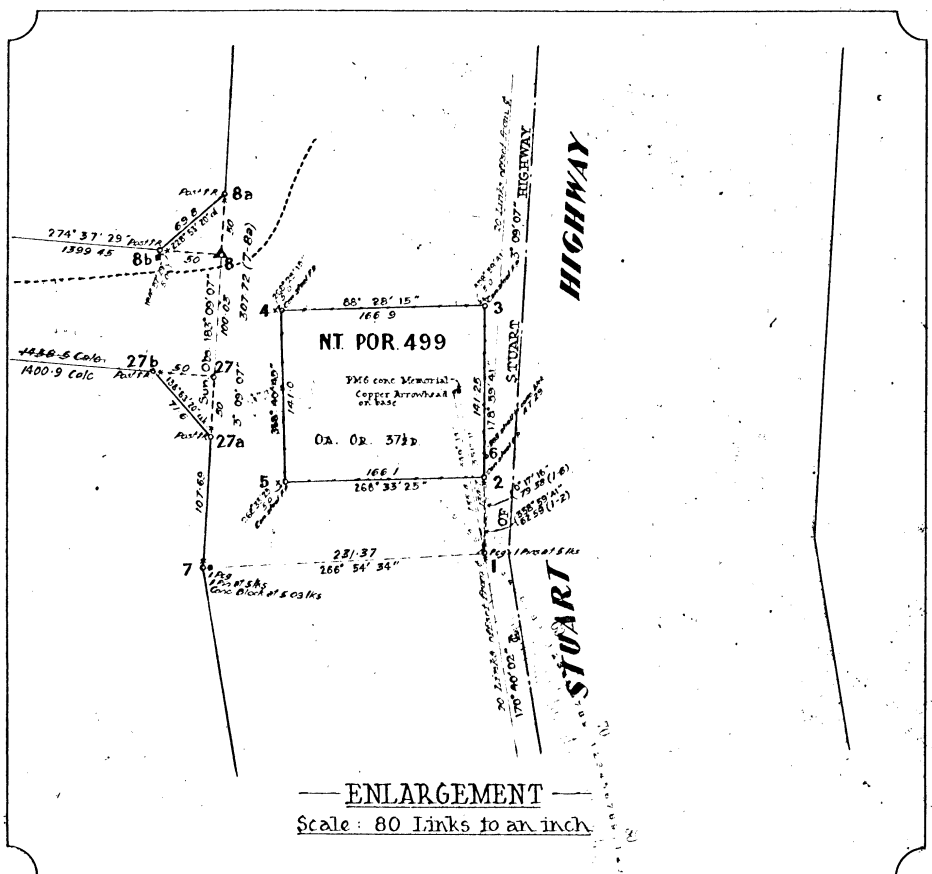
Town of Hundred of County of Scale: 8 chains to an inch

Traverses and Secants

Line	Bearing	Dist.
------	---------	-------

Reference to Corners

Cor.	Bearing	From	Links	Marks
------	---------	------	-------	-------



ENLARGEMENT Scale: 80 Links to an inch

Plan approved as amended
 Date 9-6-1960
 Surveyor-General

Note: Road between stations 9 and 14 surveyed but not opened

Note: Concrete Blocks shown thus [Symbol] Iron Pins [Symbol]

ENLARGEMENT B Not to Scale

Joins A. 18

P.L. 396.

REFERENCE TO STATIONS

Station	Mark	Reference marks	Station	Mark	Reference marks
9	Iron Peg	1 Pins at S	15a	Peg	1 Pin at S-15
9a	Past		21	Past	1 Pin at S-15
10	Iron Peg	1 Pins at S, CB at S-23	21a	Peg	1 Pin at S-15
10a	Past		22	Past	1 Pin at S-15
11	Iron Peg	1 Pins at S	22a	Peg	1 Pin at S-15
11a	Past		23	Past	1 Pin at S-15
12	Iron Peg	1 Pins at S, CB at S-26	23a	Peg	1 Pin at S-15
12a	Past		24	Past	1 Pin at S-15
13	Iron Peg	1 Pins at S	24a	Peg	1 Pin at S-15
13a	Past		25	Past	1 Pin at S, CB at S-20
14	Iron Peg	1 Pins at S, CB at S-11	25a	Peg	1 Pin at S
14a	Past		26	Past	1 Pin at S, CB at S-10
15	Iron Peg	1 Pin at S	26a	Past	1 Pin at S

REFERENCE TO CORNERS

Station	Bearing	Distance	From	Mark
6	142° 06'	148.85	Scrubtree	OTR
7	135° 07'	67.25	Pine	TR
8	105° 30'	58.67	Bloodwood	TR
9	263° 36'	78.7	Bloodwood	TR
9a	63° 30'	13.68	Bloodwood	TR
15	94° 41'	78.15	Bloodwood	TR OTR
22	250° 48'	71.23	Ironwood	OTR
24	212° 13'	102.67	Bloodwood	OTR
25	297° 25'	185.65	Bushy	OTR
25a	134° 02'	108.2	Bloodwood	OTR
26	228° 08'	61.83	Lancewood	OTR
26a	184° 00'	80.85	Lancewood	OTR

Asimuth { Observed at [Symbol] / Assumed from [Symbol] }
 Surveyor's Certificate
 I hereby certify that this survey was performed by me and/or under my immediate supervision in strict accordance with the Licensed Surveyors Regulations that on 13. 7. 55 I completed the survey and that the plan is in all respects accurate.
 Date 9. 9. 57
 Licensed Surveyor [Signature]

Field Book No. B.J.L. 12 INSTRUCTION N° B.J.L. 55/2 S. 9. 55
 Calculation Book No. N.S.G. 2 fol. 33-37, 39 I.N.A./I.R.
 Drawn by N.S. OUN 9. 8. 56
 Registered by N.S.G. 9. 8. 56
 Charted on P.P. N.S.G. 9. 8. 1956 (Sheet 3000)
 Compared with F.H. C.F.C. 10. 8. 57
 Examined by [Signature] P.R. 57
 Diagram passed [Signature]
 Date 8. 1. 60

Survey approved and certified correct.
 Date 8-1-1960
 Surveyor General N.T.
 A. 17 3/104-6