

National Steam Centre

KEEPING AUSTRALIA'S MECHANICAL HERITAGE ALIVE



HERITAGE IN MOTION

Engineers Australia recognises the **National Steam Centre** as an important collection of significant engineering heritage items.

The Centre has a strong emphasis on keeping exhibits in operating condition. This allows visitors to experience the machinery in operation and members to maintain the skills required to operate and repair historical machinery.

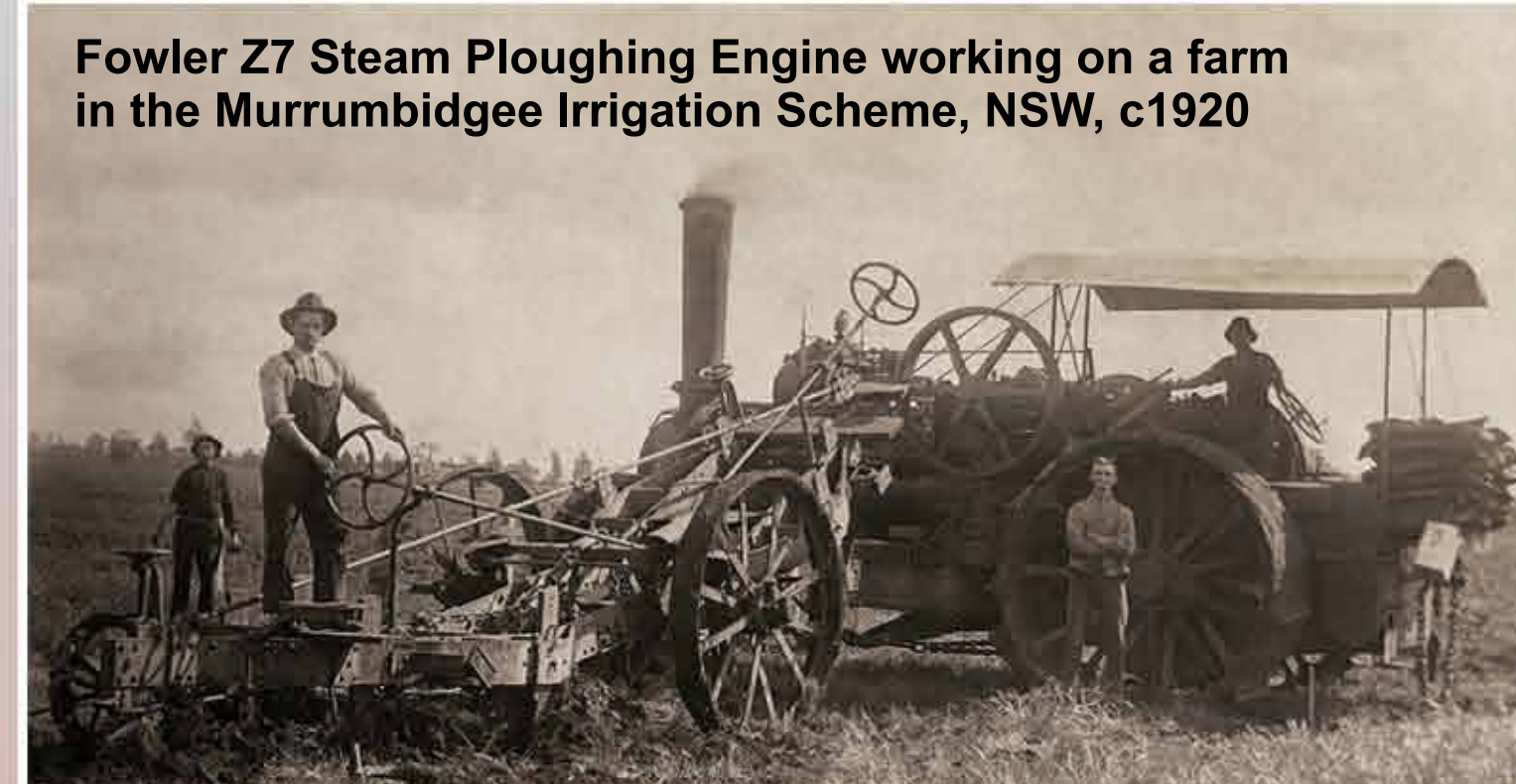


Scoresby, 1983

THE SCORESBY SITE

This site was used by the Melbourne and Metropolitan Board of Works (MMBW) as one of the main access points for the construction of the Dandenong Valley Trunk Sewer which began in 1973. The Club signed a lease for the six hectare site in 1986.

The **National Steam Centre** at Scoresby has one of the largest and most diverse collections of industrial heritage machinery in Australia. The collection has been built up and maintained by the dedication and commitment of many volunteers over many decades. Starting with steam-powered vehicles and traction engines, the Centre's collection has now expanded to more than 500 items including stationary and portable steam engines and all kinds of internal combustion machinery.



Fowler Z7 Steam Ploughing Engine working on a farm in the Murrumbidgee Irrigation Scheme, NSW, c1920

THE MELBOURNE STEAM TRACTION ENGINE CLUB

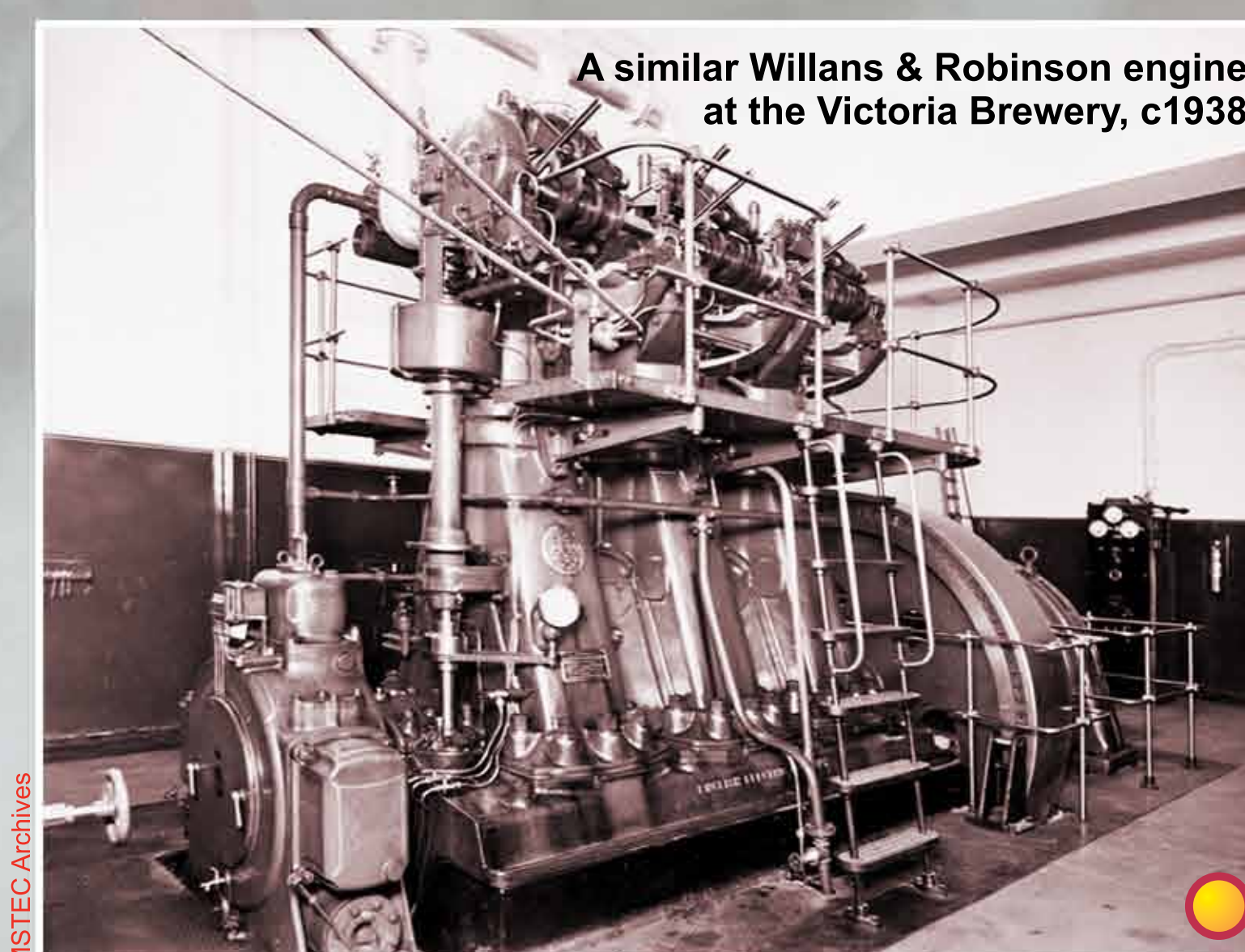
The Melbourne Steam Traction Engine Club (MSTEC) was formed in 1963 and held its first Steam Rally in 1969. This has now become the annual **Scoresby Steamfest** rally held in March each year. As well as operating the Centre, the Club restores and maintains exhibits, conducts training courses, and has an extensive library and archive.



Ransomes & Rapier W90 Walking Dragline

From Morwell, Victoria ...

... powered by a 149 kW five cylinder diesel engine, this 111 tonne dragline could move itself by taking giant steps. Made in England for the State Electricity Commission of Victoria, it was used at the Morwell coal mine and briquette factory from 1950 to 1980.



A similar Willans & Robinson engine at the Victoria Brewery, c1938

From Collingwood ...

... this 187 kW air-blast diesel engine drove the standby electricity generator at Carlton & United's Carlton Brewery from 1928. Later it provided emergency power supply for their malting works at Collingwood.

The **National Steam Centre** collection has examples of machinery from a variety of industries from all around Australasia. Many of them have been restored to working order and provide a unique view of our heritage.



No 2 crushing engine at the Millaquin Mill

From Bundaberg, Queensland ...

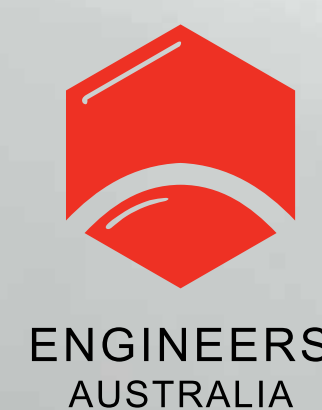
... a single cylinder horizontal steam engine, one of the largest ever built by Walkers Ltd of Maryborough, Qld. It was used to drive the sugar cane crushing plant at the Millaquin Mill in Bundaberg from 1964 until 2009.



Lyttelton II in Lyttelton Harbour, New Zealand

From Lyttelton, New Zealand ...

... the complete engine room from the twin-screw steam tug **Lyttelton II** built in Renfrew, Scotland. It operated from 1939 until 1980 and was the last working steam tug in New Zealand.



Engineering Heritage Marker placed on 29 September 2013, in the 50th year of the Club

Engineers Australia Victoria Division – Melbourne Steam Traction Engine Club



For more details about this and other engineering heritage works, go to www.engineersaustralia.org.au/heritageregister/search