

CEREMONY REPORT
FOR THE
GUNDAGAI HISTORIC
BRIDGES

AS
HISTORIC ENGINEERING MARKERS

28 November 1998



The official party at the unveiling of the plaque.
Left to right, Bruce Lord, Senior Asset Manager RAC; Peter Walsh, President of Sydney Division, Institution of Engineers, Australia; Jim Sharman, Chairman, Gundagai Historic Bridges Inc; Councillor Robert Butcher, Gundagai Shire Council and GHBI; Charlie Blomfield, Regional Manager South Western, RTA.



The historic bridges as they cross the Murrumbidgee River flood plain at Gundagai.
Top - in the foreground is the the road crossing, 1867 iron truss road bridge, the Prince Alfred Bridge,
and the long timber girder viaduct. In the middle is the long timber truss railway viaduct.
Bottom - the 200-foot steel railway truss that carried the Tumut line over the river.

ENGINEERING HERITAGE COMMITTEE
INSTITUTION OF ENGINEERS, AUSTRALIA

ANNOUNCES THAT

A COMMEMORATIVE PLAQUE

WILL BE UNVEILED FOR THE

GUNDAGAI HISTORIC BRIDGES

AT GUNDAGAI

ON

28 NOVEMBER, 1998 AT 2 PM

INCLUDING A HERITAGE DISPLAY AND REFRESHMENTS

ALL WELCOME

YOUNG ENGINEERS SYDNEY

Public Speaking and Awards

The Young Engineers Sydney held it's annual Public Speaking and Awards night on the 2 September in the Auditorium at Sydney Division. From all reports from both entrants and spectators the night was a great success with over 80 people attending.

The winner of the public speaking final was **Shane Geha** who's speech was both interesting and informative. The title of Shane's speech was *If Floats & If Flies* which looked at other uses for concrete.

Second place went to Simon Borland whose speech was titled *The Unreasonable Man* and third place went to Peter Sorrenson for his speech titled *Modal Analysis of a Bridge Structure*.

The competition was close and only a couple of points separated competitors. I would like to take this opportunity to thank and congratulate all the competitors and winners on behalf on Young Engineers Sydney.

— Greg Hones
Education & Formation Executive

AND THE WINNER IS.....

The Illawarra/Sutherland Regional Office together with Tycan Australia Pty Ltd, Faculty of Engineering and Faculty of Informatics, University of Wollongong sponsored and organised a School/Poster Competition. This event was run as part of the 10 Days of Engineering Program in conjunction with the "Models of Genius" exhibition at the Wollongong City Gallery. This competition was a way of creating an awareness of what engineering is all about at a High School Level.

The competition had three themes: Year 7/8 "The World of Engineering", Year 9 "Engineering in History" and Year 10 "Professional Engineers at Work". A total of 25 posters were entered and judged at the University of Wollongong Courses and Careers Festival on Sunday, 30 August, 1998. Carey McIntyre, President of the Illawarra/Sutherland Regional Office was one of the judges, together with Professor Brendon Parker, Dean of Engineering and Professor Sharon Bell, Dean of Creative Arts.

This was the first time such a poster competition has been run and a generous first, second and third prize was awarded in each theme. The best school prize went to Edmund Rice College who entered 21 of the posters.



School Poster Competition Sunday 30th August, 1998. One of the winners with Prof. B.Parker, Dean of Engineering.

— Elaine Rhodes
Acting Regional Co-ordinator
Illawarra/Sutherland Regional Office

Engineering Heritage Committee

announces that

A Commemorative Plaque

will be unveiled for the

Gundagai Historic Bridges

at Gundagai on 28 November at 2pm,

including a heritage display and refreshments

All welcome

YOUNG ENGINEERS SYDNEY

Project Management Seminar

All Young Engineers are invited to attend a Project Management Seminar on the 29th October 1998 at 6.00pm at the Harricks Auditorium, 118 Alfred St, Milsons Point. The seminar will be hosted by Instrument Data Communications Pty Ltd. If you would like to attend please contact Greg Hones Education & Formation Executive on Phone (02) 9929 8544 or Fax (02)9956 7670.

CPEng Workshops

Upgrade your professional status to CPEng, College Membership and NPER by attending one half day workshop and by subsequently submitting your application.

WORKSHOP DATES Friday 9 October or Saturday 10 October

TIME 8:45am - 1:00pm

VENUE IEAust Harricks Auditorium
Ground Floor, 118 Alfred St, Milsons Point

CONTACT The office on (02) 9929-8544 to confirm your eligibility and book your place as spaces are limited!

Attention Graduates!!!

Major breakthrough for graduates to become CPEng.

Now you can have your Competencies Continuously Assessed instead of waiting until you have achieved them after several years of experience.

For details and package call
Greg Hones at Sydney Division on (02) 9929 8544.

ENGINEERS!

Are you concerned about using computers?

Sydney Institute of Technology in collaboration with IEAust, is offering the following courses to upgrade your computer skills. No prior knowledge of computers is assumed.

- **Computerised Accounting to manage your Engineering Business using MYOB.** No prior knowledge of computers/ accounting is required. Slash your accountant's fees.
- **Computer Aided Design using Finite Element Program.** Minimum qualifications is a degree in engineering.
- **Computer Aided Maintenance Management using Mainpac.**
- **Computer Aided Project Management using MS Project.**
- **Computer Aided Drafting using AutoCAD or Microstation.**
- **Computer Programming using C++ or Visual Basic**
- **Excel for Engineers from Basic to Advanced skills**
- **Access for Engineers**
- **Word Processing using MS Word**
- **Introduction to computers and Windows 95 for beginners**

The courses are held in the evening or Saturdays. If any organisation has sufficient number of participants and requires training during working hours, we can offer courses to suit your needs.

We also offer courses on Contract Management, Total Productive Maintenance, Noise and Vibrations, Engineering Management and PLC Programming.

We are also accredited trainers for the Seven Habits of Highly Effective People by Stephen R Covey.

Please contact Bala Subra on Phone: (02)9217 3984

Fax: (02) 9217 4927 or

e-mail:

subra.bala@tatensw.edu.au

Premiere Event

Assessing options in Energy & Environment

Nuclear Science & Engineering for sustainable development

WHEN: 19 - 21 October, 1998

WHERE: The Wentworth Hotel, Sydney

For further information please call IIR conferences on 02 9923-5090

Neighbourhood Engineers

Have you thought of ways you can promote engineering as a profession or in general?

If you are young or old, you too can share your experiences with the next generation to help promote engineering by joining in the Neighbourhood Engineers Program. This program links engineers to primary or secondary schools in their area.

There are many schools out there that have not yet been linked, so if you are interested please contact Greg Hones, Education and Formation Executive on (02) 9929-8544.

ATTENTION All Young Engineers!!!

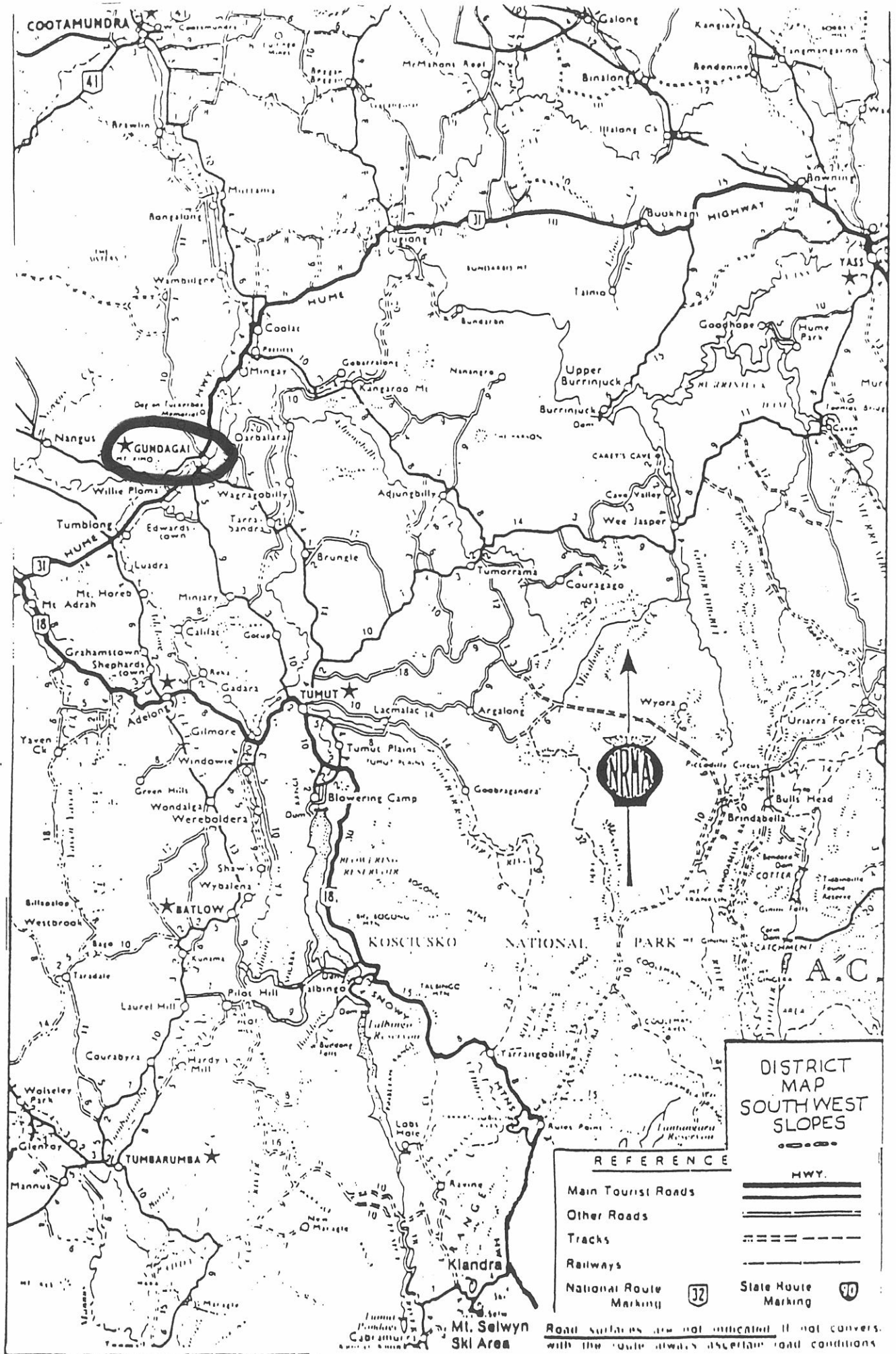
Young Engineers Sydney Annual General Meeting & Elections

WHEN Monday 12 October, 1998

WHERE Boardroom Level 1,
118 Alfred Street, Milsons Point

TIME 5.30 for 6.00pm

CONTACT Greg Hones on 9929-8544



COOTAMUNDRA

41

GUNDAGAI
MT. KINGO

TUMUT

BATLOW

TUMBARUMBA

Mt. Selwyn
Ski Area

DISTRICT
MAP
SOUTH WEST
SLOPES

REFERENCE

Main Tourist Roads

Other Roads

Tracks

Railways

National Route Marking

32

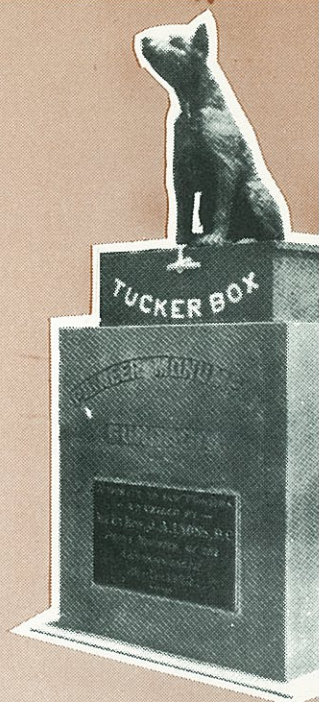
State Route Marking

10

Road surfaces are not indicated if not covered with the route always ascertain road conditions

Welcome to
historic

GUNDAGAI



The Gundagai Court House





The two sites of historic Gundagai. Top - the layout of the first town on the flood plain of the Murrumbidgee River which the flood of 23 June 1852 swept away. The new town was sited on the southern slopes of Mount Parnassus, as shown in the bottom photograph. Consequently, the decks of the 1867 road and 1903 rail crossings were built above the maximum flood level.

The Gundagai Independent

Printed and published by Patrick F. Sullivan
93 Sheridan Street, Gundagai.

P.O. Box 108 GUNDAGAI 2722
Phone (02) 69 441027

PRINT POST APPROVED
PP 234 843/00001

VOL. 101. NO. 22.

THURSDAY, 26th NOVEMBER, 1998

Recommended and maximum selling price 80¢

Gundagai's bridges to be recognised

Gundagai's twin historic bridges, spanning the Murrumbidgee flood plains for more than a century, are to be recognised for their colonial engineering significance

A bronze plaque will be unveiled by The Institute of Engineers, Australia and The National Trust of Australia on Saturday at 2 p.m. at the junction of the bridges.

The Prince Alfred Bridge was opened in 1867 and The Gundagai Railway Bridge in 1903.

Barry O'Keefe, President of the National Trust of Australia and Chairman of ICAC; Peter Walsh, President of the Sydney Division of the Institute of Engineers, Australia; and twenty dignitaries representing engineering and heritage interests in NSW will be among the guests.

Afternoon tea on the platform of the nearby historic Railway Station will be held after the

Police warn 'lock up!'

Gundagai Police have issued a warning to people to lock their vehicles, following a rash of thefts from cars parked in the Sheridan Street area.

OIC Police, David Guymet, said that wallets, cameras, handbags and clothing had been among items stolen.

"We are now noting unlocked vehicles when we patrol, and we are placing a 'flyer' in them,

warning the owners that vehicles should be locked," he said.

"It is in the best interests of everyone if you lock your vehicle, even if you are only leaving it for a short time," he added.

He said the thefts were not confined to the night time hours.

"There have been some in broad daylight. We appeal to all motorists to exercise commonsense."

TIDY TOWN FINAL!

Gundagai has been named as a finalist in this year's Tidy Town awards.

Forty-two NSW finalists have been named by the Keep Australia Beautiful Council.

They include Gundagai, Khancoban, Wagga, Ganmain, Leeton, Yanco, Whitton and Cowra.

General Manager of the Keep Australia Beautiful Council, Michael Gapes, said the Tidy Town judges said this year's contest has been one of the most closely contested on record.

The presentation night will be held at Lithgow on December 5th.

The Tidy Towns competition is increasingly about genuine environmental improvements, described as an important development for rural NSW.



Bzzz - Olympics

This week's resignation from SOCOG of Rod McGeoch highlighted the nonsense which surrounds the staging of the Sydney Olympics. We have politicians fairly raving at one another, trying to score points, while the Olympic dream turns into a nightmare for everyone. I would not put Bob Carr, Peter Collins and Ian Armstrong in charge of running a public lavatory at North Nubba. I would not let any politician near the organising of the Olympics. One thing is certain. The people of this state are going to be saddled with a debt burden which our grand kids will still be paying off. Any city which wants the Olympics has a collective population of pumpkin heads. The games are nothing but headaches, and very expensive ones at that.

Bzzz - TAB

Gundagai's TAB agency closes down on Monday, month's end. It will reopen the next day in the Criterion Hotel. Once upon a time, when the TAB was born, the rules were that a betting agency could not be near licensed premises. Now the TAB is busy shifting just about all outlets into licensed premises. I find it sad that those who have their own reasons for eschewing pubs or clubs, now find they have nowhere else to have a flutter.

Bzzz - Dole

The Federal Government is considering a new scheme which will cut dole payments to the unemployed unless they rigidly follow a new set of guidelines. Victorian Premier, Jeff Kennett, says politicians are underpaid and should get more, much more, money. There's a funny view of life from the top, is there not?

Bzzz - Farical

The Prince Alfred Bridge thing has become farical. The bridge has been partially closed and controlled by traffic lights for a couple of months now. But the RTA has yet to strike a blow in painting the spans across the Murrumbidgee. Dime

Proposal for public meeting

A Public meeting at Gundagai Council Chambers on Monday will discuss the establishment of a Healthy Shires Committee, and the proposal to provide a "one stop shop" for all community services.

Copies of the report of the steering committee, which examined the co-location of services, can be seen

The proposal outlined by the steering committee is an ambitious one, but will need massive community

Praise

(To The Editor)

Dear Sir,
Congratulations have to go to the wee small Dog on the Tuckerbox committee in having organised a great street parade.

Everyone would have liked the parade to go down, come up and go down again, and many expressed enthusiasm in joining in next years parade with ideas of their own.

Their tireless effort certainly paid off.
Barbara French.

Passing

A B C D E F G H

Yass & Sydney
'DOG ON TUCKERBOX'
Snake Gully

HUME HWY

Spring Flat DVE

Lawn Cemetery

WILLIAM ST
CARRIG PLACE

Uralba Hostel

Ambulance Station

Athwood Ave

Nicholls AVE

High School

Primary School

Louison Drive

Gilmor Place

Nurse Murrumbidgee Road

Neil McInerney St

Cemetery

ANN ST

L CHARLOTTE ST

PHILLIP ST

SPRING ST

ANN ST

JUDY ST

MOSES ST

HANLEY ST

HANLEY ST

HANLEY ST

HANLEY ST

HANLEY ST

HANLEY ST

HANLEY ST

HANLEY ST

HANLEY ST

HANLEY ST

HANLEY ST



TOURIST INFORMATION CENTRE

Amundra Burra

FIRST AVE
STAFFORD ST.

US, Junez & Wagg

Boal Ramp

GOLF COURSE

ANZAC PARK Sportsground

CEREMONY SITE

RACECOURSE SHOWGROUND RODEO GROUND

MURRUMBIDGE

MIDDLETON DRIVE

Prince Alfred Bridge

Sheehan Bridge

RIVER

BRUNGLE ROAD

JACKAL Tumut via Brun

MURRAY ST

RICKY ST

LAKE ST

TOM ST

LAGOON ST

CAMPHOR LANE

STUCKEY CLOSE

Rotary Lookout

Primary School

**HISTORIC ENGINEERING
MARKER**

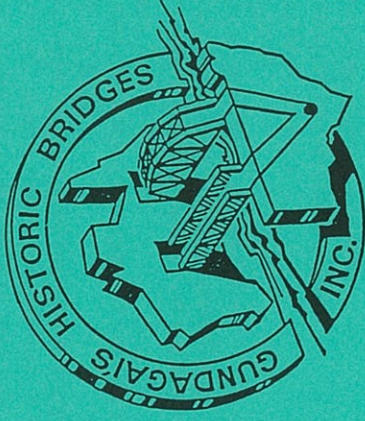
**HISTORIC BRIDGES
OF GUNDAGAI**

THESE TWO BRIDGES COMPRISE SIMILAR PIN-JOINTED STRUCTURES OVER THE MURRUMBIDGEE RIVER AND TIMBER VIADUCTS OVER THE FLOOD PLAIN.

THE 1867 IRON, THREE-SPAN WARREN TRUSS ROAD BRIDGE AND TWO SUCCESSIVE VIADUCTS CARRIED THE HUME HIGHWAY FOR 110 YEARS. THE IRON CYLINDERS FOR THE PIERS WERE CAST AT MITTAGONG BY FITZROY IRON WORKS AND THE TRUSSES WERE ASSEMBLED USING IRON WORK FROM ENGLAND.

THE RAILWAY BRIDGE IS A STEEL HOG-BACK STYLE TRUSS WHICH WAS MANUFACTURED IN THE USA BY A & P ROBERTS COMPANY. THE BRIDGE AND ITS TIMBER HOWE TRUSS VIADUCT, THE LONGEST IN AUSTRALIA, WERE COMPLETED IN 1903 BY THE DEPARTMENT OF PUBLIC WORKS' ENGINEERS AND DAY LABOUR. THESE STRUCTURES CARRIED THE BRANCH RAILWAY TO TUMUT FOR 82 YEARS.

**DEDICATED BY
THE INSTITUTION OF ENGINEERS,
AUSTRALIA
AND GUNDAGAI HISTORIC
BRIDGES INC. — 1998**



**Plaquing
Ceremony
28th November 1998**



The Prince Alfred Bridge

This bridge is described as "technically sophisticated and a major achievement of colonial engineering" by the Institution of Engineers. It was one of the earliest major bridge works of the fledgling Department of Public Works in the colony of New South Wales.

The Prince Alfred Bridge, named after Queen Victoria's second son, was opened on October 17 1867.

The construction was indeed a remarkable engineering feat in colonial times. Four pairs of cast iron cylindrical piers, made in Mittagong and weighing 2 tons, were delivered to Gundagai by bullock drays.

The Prince Alfred Bridge is:

- the only bridge of its type in Australia.
- a sophisticated structural engineering feat of its time.
- the second oldest metal truss bridge in Australia.
- the longest road bridge in NSW and one of the longest in Australia.

Known by many as "the rattly bridge" because of the long rattling rough ride on the viaduct, it carried Hume Highway traffic for 110 years.

Much of the bridge is now open only to foot traffic but the span crossing the Murrumbidgee River still carries vehicular traffic and has done so for 131 years.

It is 3087 feet long and cost £38,000 (\$4 Million today). The new Sheahan Bridge which replaced it cost almost \$6million.

The Prince Alfred Bridge was closed to vehicles in 1977 and listed for demolition. A community based group of historians and conservationists (Gundagai Historic Bridges Inc) was formed and ten years of lobbying followed to prevent demolition. The bridge is now listed on the register of the National Estate and classified by the National Trust (NSW).

In 1988 a Bi-Centennial Grant of \$280,000 was granted to help preserve the bridge, however, interest from this investment is insufficient for long-term maintenance. GHBI remains the trustee of this historic link to the colonial period.

The Railway Steel Truss Bridge

After the railway line finally reached Gundagai in 1886, politicking and planning continued for the next 14 years to extend the railway line a further 5.1 km, across the Murrumbidgee River, to Tumut.

The line and railway bridge were finally opened in 1903 at an estimated cost of £41,000 (only £3,000 more than the Prince Alfred Bridge). The total length of the railway crossing is 3340 feet or 1.01km. It helped develop the country to Tumut for the next 82 years - until 1985.

The Gundagai Railway Bridge is the last NSW railway truss of its type remaining in its original place. From an engineering viewpoint, its American pin-jointed truss is rare in Australia and it was an experimental bridge that proved the merit of rivets.

CEREMONY

Jim Sharman
Gundagai Historic Bridges Inc

Opening remarks.

Robert Butcher
Gundagai Shire Councillor

'Historic Gundagai'

Charlie Blomfield
Regional Manager RTA

The road crossing & RIA Heritage.

Bruce Lord
Senior Asset Manager RAC

The railway crossing & SRA Heritage.

Peter Walsh
President Sydney Div. IE

The Institution's National plaquing programme.

Declaration of the Bridges as Historic Engineering Markers.

Unveiling of the Plaque

Other official guests:

Hon Justice Barry O'Keefe	President National Trust Aust.
Don Fraser	Secretary Sydney Div. IEA.
Ken & Margaret Wyatt	Chair. Engineering Heritage IEA.
Michael Clark	Engineering Heritage IEA.
Anne Conway	Dept of Urban Affairs & Planning.
Don Cottee	Hunters Hill Municipal Council.
Rob Breen	Institution of Engineers.
John Breen	Institution of Engineers.
Bob Harvey	Institution of Engineers.
John Hopman	Director NSW Dept Transport.
Mr & Mrs Finlay	Darlington Point.
Brian & Judith Wild	Ex President GHBI.
Robert & Gaye McDonald	Ex President GHBI.
Margaret & Kerry Hawke	Ex Secretary GHBI.
Leon Patterson	Engineer Gundagai Shire.



Master of ceremony Jim Sharman, Chairman, Gundagai Historic Bridges Inc and coverage by local Prime and WIN TV channels.



The assembled guests and townsfolk, and the official party.



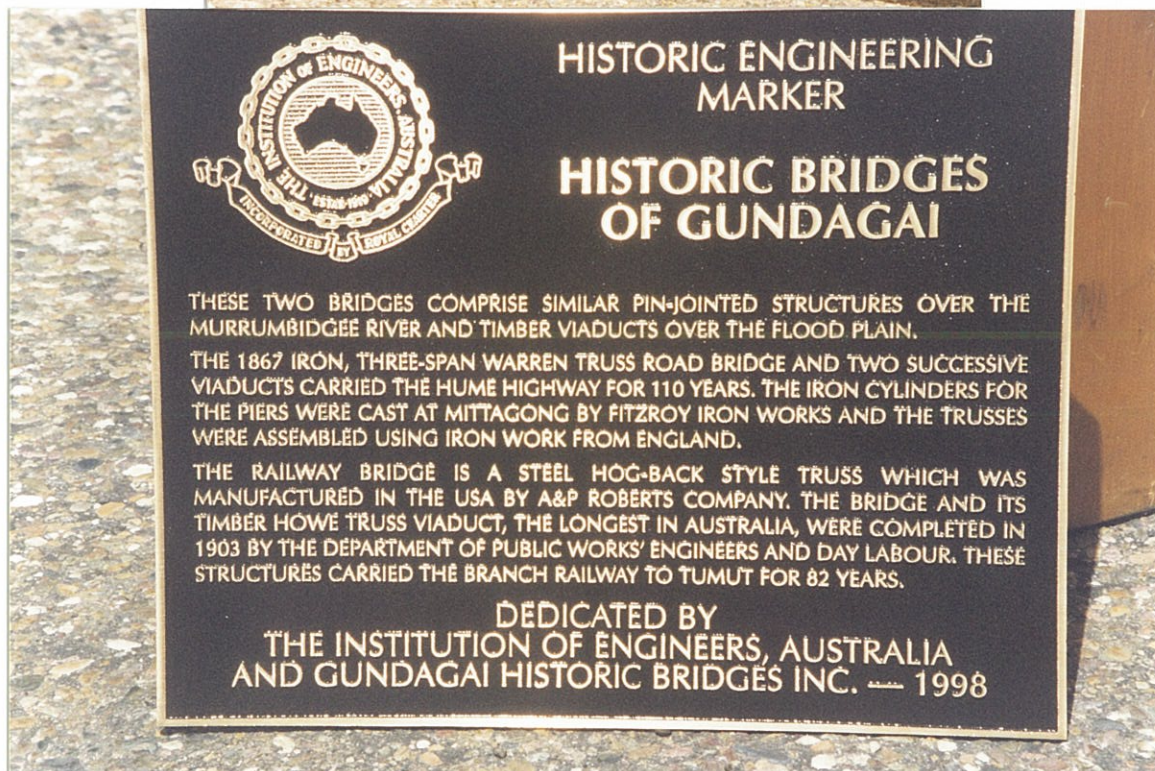
Councillor Robert Butcher, members of the official party and the long timber road viaduct



Charlie Blomfield represented the RTA and Bruce Lord represented Rail Access Corporation.



Peter Walsh represented the Institution of Engineers, Australia and invited the official party to join him in unveiling the plaque.



The plaque.



Local TV interviews with Robert Butcher and Bruce Lord.



Top - Local WIN TV interviewed Peter Walsh. Bottom - the 1886 Gundagai railway station, also cared for by GHBI, was the venue for refreshments.



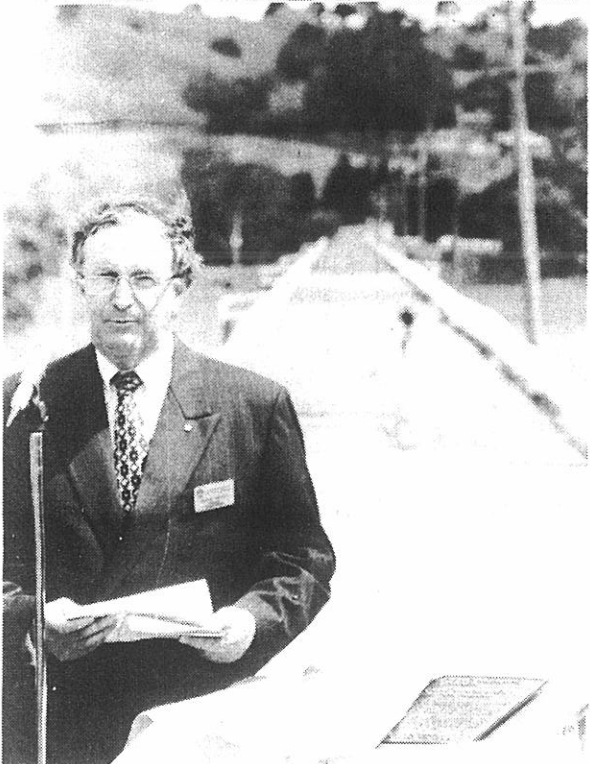
Top - Guests enjoyed the local hospitality on the platform of the historic railway station. Bottom - Members of GHBI and I E Aust guests attended a celebratory dinner on the evening of the ceremony.

ENGINEERS MARK HISTORIC SIGNIFICANCE OF BRIDGES

The Institution of Engineers of Australia on Saturday held a plaquing ceremony to mark the historic engineering significance of



The scene on Saturday.



Peter Walsh, President of the Sydney Division of the Institution of Engineers, who unveiled the plaque.

Gundagai's revered twin bridges - Prince Alfred Bridge and the railway viaduct, which side by side span the Murrumbidgee flood plain.

In a rather startling development, Bruce Lord, Senior Asset Manager for the railways, declared that it was possible the old rail bridge could again be used, if the Cootamundra-Tumut branch line was re-opened.

He said there had been a resurgence in interest in the use of railways for freight, and a number of proposals had been put forward to reopen the line.

"It would be a big task," he said, "But if sufficient freight could be generated it is not beyond the bounds of possibility."

Saturday's ceremony was held in conjunction with the local body, Gundagai Historic Bridges Inc., which is dedicated to the preservation of the bridges, and associated landmarks such as the Gundagai Railway Station.

Chairman of GBHI, Jim Sharman, told the well attended gathering that there was now no thought of the bridges "not being kept", adding that they were two of the structures helping to make Gundagai "a formidable tourist town."

Cr Robert Butcher, also a GBHI committee member, said the then DMR had Prince Alfred Bridge slated for demolition in 1977 when Sheahan Bridge opened.

Local opposition was strong with the late Don Gorman the first resident of a committee formed to retain the bridges.

In 1985 he was followed by Brian Wild, whose efforts were described as "very dogged".

Cr. Butcher said Mr. Wild and his wife, Judy, had put a lot of work and effort, and had taken on a strong lobbying role which eventually paid off.

Grants forthcoming in 1988, including one from the RTA of \$100,000, the estimate cost of demolition of Prince Alfred Bridge.

That sum was to be invested and the interest used on maintenance.

Cr. Butcher said the funds from the RTA and other sources had been

Will the rail link re-open one day?

"completely inadequate".

The committee this year had been unsuccessful in seeking a Federation Fund grant of \$2.8 million, but he added it would keep trying, and would continue its own, more modest, fund raising activities.

As well as the bridges, GBHI had taken on the task of preserving Gundagai's historic railway station, built last century, and heavily vandalised after the line was closed in 1984.

Cr. Butcher said the station building was stripped by both vandals and "professional collectors, who took anything which could be moved."

Since then, with the aid of government grants, much progress had been made, but much work remained to be done.

"The committee is a dedicated bunch and we will stick with it," he said.

RTA Regional manager, Charlie Bloomfield, said the RTA was now conscious of the heritage values of the past, and no longer only interested in building new structures.

He said a survey was underway of timber bridges to assess their heritage value, and its recommendations would be available early next year.

"It is very important that we do not forget the skills of our forefathers," he added.

Peter Walsh, president of the Sydney Division of the Institution of Engineers, revealed that in being granted "historic marker" status, the Gundagai bridges joined not only historic buildings and structures, but such revolutionary engineering ideas as the stump jump plough and the Howard rotary hoe.

The plaque which outlines the historic significance of the bridges was unveiled by Mr. Walsh.



Bzzz- Rhet Alby Schultz, MP for Hume, delivered his ma speech in Federal Parliament on Thursday. It w characteristically Alby-type speech, having a cra all and sundry. (See extracts elsewhere this issue). I do wish Alby would update his rhetoric. He ref to the ALP's "socialistic ideologies". Th yesterday's term, surely. The current ALP is anyt but "socialistic". When in Government they wer keen on privatisation as any conservative. How o you describe the mob that sold the people's bank Commonwealth, as socialistic? The current stands somewhere to the right of Bob Menzies. ALP men, fair dinkum no nonsense socialists Ben Chifley, Eddie Ward, Tom Uren and Artie Cal would not line up with the bunch of econ rationalists who today pose as the ALP. By tod standards those blokes may be reckoned far lefties. But they did have a bit of fire, a ton of and a clear vision of an egalitarian society.

Bzzz- P One time Gobarralong resident, Margo Fuge, no Cootamundra, has given us a little poem. "I fou turning out a box memories recently," she said, practically certain it came to me via Bessie and Stanley, who lived next door when we wer Gobarralong". So here it is,-

THE JACKALASS SONG

*There's the Boobys, the Casnaves,
McCarthy's and Hours,
The best of good friends,
Who ever were born.*

*There were Quinnells and Coopers,
And Walshes galore,
Then came the Lindleys
And Potters for sure.*

*There were Bells ringing out,
Calling for Elliots and Smiths,
The Fields, Andersons, Sandersons
And more.*

*The Mantons and Murdochs,
The Fosters we adore,
We still love old Jackalass,
And will for evermore.*

-Composed by M. E. H

Bzzz- Dec It does appear that we are witnessing the decline once great industry - wool. Despite the fact that t has been a bit of upward movement in the mark recent weeks, prices are still way down. Tumbalong grazier, who sold in recent days, and prides himself on his fine wool clip, told me the return would be less than half that of last y Forecasts are that Australia's sheep population be just 117.9 million, the lowest flock since 1950s. The decline has come from a high of million. Wool production is down 3.9% from season and in coming years it is predicted to fu decline. The big drop in sheep numbers has bee the wheat-sheep belt, with farmers now more incl to grow canola and like crops.

Bzzz- No Surf It should be no surprise to anyone that the Surf I savers Association was quick to deny yesterd: *Sunday Telegraph* story which claimed lifesav would refuse to rescue anyone surfing outside the defined by the safety flags, a feature of all Austr surf beaches. It astounds me that such a story mac into print. Anyone with one teeny-weensy ker of sense would have recognised it for rot. Lifesavers doing nothing as people drown! Also balderdash. No wonder people do not trust the n media!

Bzzz- This Does Gundagai have a specialist plant thief? The o day, plants were purloined from the gardens of Patrick's School. Now Garden Club members tell that plants they have provided, and cared for, Carberry Park, have also been stolen. It is harc credit that anyone with a love of beauty could als a thief. But apparently we have one such in our mic

OUR HISTORIC TWIN BRIDGES - THE BRIDGES WERE ESSENTIAL IN TIMES NOW LONG PAST

Double threat to sheep in good season

Sheep throughout much of NSW are under threat of worm attack - not only because of the exceptional season, but also from worms that have developed resistance to drenches.

Stephen Love, state worm control coordinator for NSW Agriculture, issued the warning to all producers. "Resistance to drenches is widespread - most farms have resistance to one or more drench groups - and many farmers are using ineffective drenches without realising it", Mr Love said.

"Producers who have not recently done a drench resistance test, and are inadvertently using ineffective drenches, could well encounter serious worm problems in the coming months". Failure to check for

The Gundagai Railway Bridge is the last NSW railway truss of its type remaining in its original place.

From an engineering viewpoint, its American pin-jointed truss is rare in Australia and it was an experimental bridge that proved the merit of rivets.

bridge were finally opened in 1903 at an estimated cost of 41,000 pounds (only 3,000 pounds more than the Prince Alfred Bridge).

The total length of the railway crossing is 3340 feet or 1.01 km. It helped develop the country to Tumut for the next 82 years - until 1985.

because of the long rattling rough ride on the viaduct, it carried Hume Highway traffic for 110 years.

Much of the bridge is now open only to foot traffic but the span crossing the Murrumbidgee River still carries vehicular traffic and has done so for 131 years.

The 3087 feet long Prince Alfred Bridge was completed at a cost of 38,000 pounds sterling, equivalent of \$4 million today. (The all-up cost of the steel and concrete 1977 Sheahan Bridge, which replaced it, was almost \$6 million).

The Prince Alfred Bridge was closed to vehicles in 1977 and listed for demolition. A community based group of historians and conservationists (Gundagai Historic Bridges Inc)

Prince Alfred Bridge, named after Queen Victoria's second son, was opened on October 17th, 1867.

The construction was a remarkable engineering feat in colonial times.

Four pairs of cast iron cylindrical piers, made in Mittagong, and weighing 2 tons, were delivered to Gundagai by bullock drays.

The Prince Alfred bridge is:

- the only bridge of its type in Australia
- a sophisticated structural engineering feat of its time
- the second oldest metal truss bridge in Australia
- the longest road bridge in NSW and one of the longest in Australia.
- Known by many as "the rattley bridge"

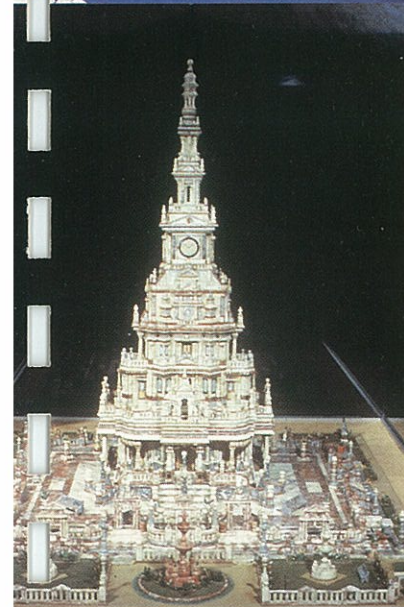
QUALITY ISSUES AFFECTING HARVEST

Widespread grain to confirm with AWB Ltd

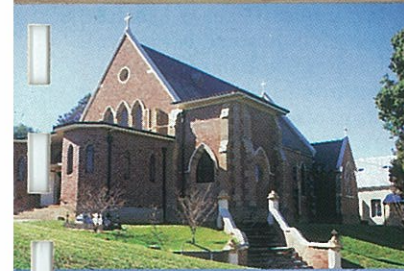




Discover
HISTORIC
GUNDAGAI
 NSW



*There's a track winding back to an old -
 fashioned shack,
 Along the road to Gundagai;
 Where the Blue Gums are growing and
 the Murrumbidgee's flowing
 Beneath that sunny sky,
 Where my Daddy and Mummy are
 Waiting for me
 And the Pals of my childhood once more
 I will see.
 Then no more will I roam when I'm
 heading right for home
 Along the road to Gundagai.*



STEEPED IN HISTORY

Situated on the banks of the Murrumbidgee River and nestling at the foot of Mount Parnassus in the beautiful Murrumbidgee Valley, the famous town of Gundagai is steeped in history and wonderful heritage attractions.

Long a favourite stopping place for travellers along the Hume Highway, historic Gundagai is a fascinating place to visit and learn about many of the uniquely Australian events, characters and buildings which have etched a special place in the folklore of this country.

It was in 1824 that the overland explorers Hamilton Hume and William Hovell, and then the rivermen Charles Sturt and Thomas Mitchell, opened up the trail for land-seekers and pioneers.

Five Mile Creek, a few kilometres north of Gundagai, became a popular camping spot for teamsters and their lumbering, supply-laden bullock wagons. Today it's the site of that famous Australian icon, the Dog on the Tuckerbox, along with 'Snake Gully' where four legendary folk characters, Dad and Dave, Mum and Mabel, are enshrined in copper.



Early morning on the Murrumbidgee River at Gundagai.

The greatest natural disaster Australia has yet experienced was the great flood of 1852 when the Murrumbidgee River swept away the original town and 83 inhabitants perished beneath those murky waters.

Gundagai is rich in its association with colonial days. Woven into its historical tapestry are legends of the prospectors, and of bushrangers Ben Hall and Captain Moonlite, drawn by the lure of the gold the miners won from the reluctant earth. Reminders of the gold fever which gripped the town and the district in 1861, and again in 1894, may be seen in the abandoned buildings and gold mines not far from the town.

Many of its magnificent heritage-protected buildings, such as churches and the outstanding court house, (scene of many historical court cases, including the trial of the bushranger Moonlite), date back well over 130 years.

Gundagai today is a sympathetic blending of fine historic architecture and modern commercial and residential development. Gundagai's expanse of fertile river flats remains to this day, with the central shopping precinct surrounded by a patchwork of farm pastures and crops, constant reminders of Gundagai's important role as a service centre for a widely recognised, rich, agricultural industry.

With its charming restaurants, and excellent accommodation to suit all budgets, Gundagai offers a tranquil yet fascinating break for the holiday-maker.

Gundagai, 225m above sea level, is 370 kms by road from Sydney, and 493 kms by road from Melbourne. Nearest towns are Tumut (35 kms), Adelong (35 kms), Batlow (66 kms) Cootamundra (59 kms), Junee (62 kms) and Wagga Wagga (84 kms).

NRMA
For H.E.L.P. contact
**North Star
Service Centre**
227 Sheridan St., Gundagai
PHONE (02) 6944 3099

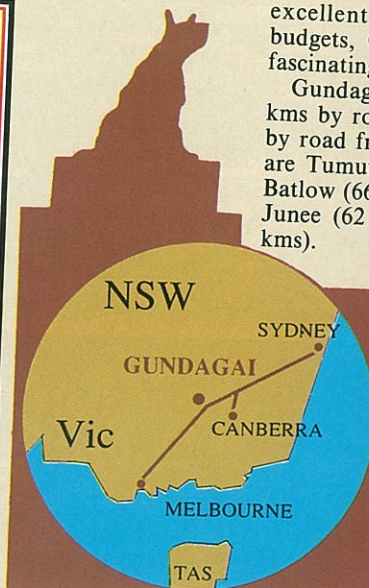
FEARNES COACHES

**EXPRESS SERVICE DAILY
WAGGA-SYDNEY OR CANBERRA RETURN
CHANGE AT YASS FOR CANBERRA**

ARRIVE	GUNDAGAI Tourist Information Centre	8.25 a.m.
DEPART		
SYDNEY	Bay 10 Syd Coach Terminal, Eddy Ave	2.00 p.m.
ARRIVE		
SYDNEY	Bay 10 Syd Coach Terminal, Eddy Ave	2.30 p.m.
DEPART		
GUNDAGAI	Tourist Information Centre	8.15 p.m.

**TOLL FREE RESERVATION 1800 029918
GUNDAGAI TOURIST CENTRE (02) 6944 1341, 6944 2145**

Licence No. 2TA002702



CONTENTS

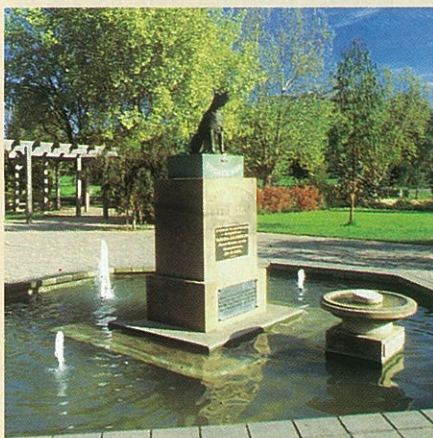
Pages 3-7: So much to see and do...The Dog, scenic lookouts, Rusconi's Masterpiece, Gabriel Gallery, famous bridges, historic buildings, museum.
Pages 8 & 9: Accommodation and dining guide.
Pages 10 & 11: Bushrangers, festivals and sporting facilities.
Pages 12 & 13: Foot tours and day trips.
Page 14: Businesses and services.
Page 15: Town map.

GUNDAGAI: SO MUCH TO SEE AND DO

Dog on The Tuckerbox

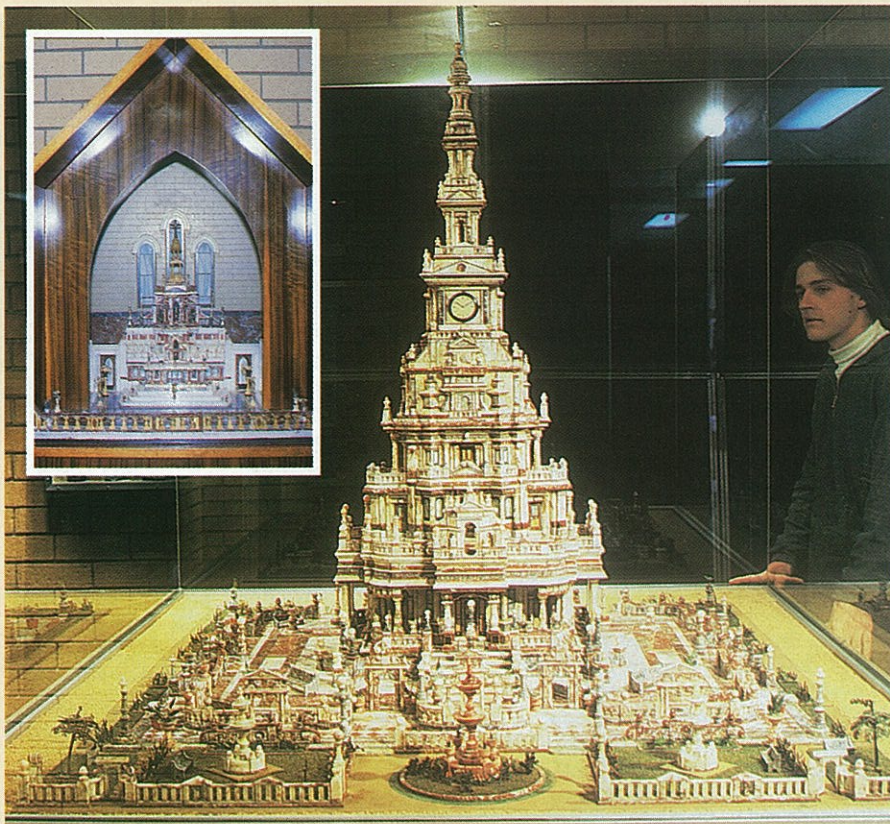
The famous Dog on the Tuckerbox is located, as the song relates, five miles (or 8 kms) north of Gundagai, just off the Hume Highway, where it guards a restaurant and souvenir and gift shop at Five Mile Creek.

The monument gives expression to probably the best-known slice of Australian folklore — mateship between man and dog. In the pioneering days a dog accompanied each wagon and, besides being a faithful friend of the teamster, guarded his master's possessions. A verse about a dog sitting on a tuckerbox was written by an unknown teamster some 100 years ago, but the well-known poem was written by poet and traveller Jack Moses.



The restaurant and gift shop complex behind the monument is set among native trees and shrubs and next to an attractive fernhouse. Nearby are the ruins of the old Five Mile pub, the remains of the hotel where camping teamsters gathered to drink and diggers slaked their thirst before moving on to the next gold strike.

Gundagai has long been immortalised through such poems and songs as 'The Dog on the Tuckerbox', 'Along the Road to Gundagai', 'My Mabel Waits for Me' and 'When a Boy from Alabama Meets a Girl from Gundagai'.



Above: The Masterpiece with (insert) the replica of Saint Marie's Cathedral.

Rusconi's Marble Masterpiece

The famous dog on the tuckerbox was sculptured by the late Frank Rusconi, but it certainly isn't the the most impressive example of the work of this exceptionally skilled artisan on exhibition in the Gundagai district. In fact one attraction not to be missed at Gundagai is a unique cathedral-in-miniature containing 20,948 individual pieces of marble, every piece cut, turned and polished by hand.

'Rusconi's Marble Masterpiece' took the late Frank Rusconi 28 years of spare time work to build.

Another Rusconi masterpiece on display at Gundagai is his replica of the altar of Saint Marie's Cathedral in Paris.

Rusconi and three other men constructed the original altar whilst he was working in Switzerland.

On returning to Australia he constructed the replica from marble collected from different parts of Australia.



It took him an average of four hours a day for seven years to construct the altar replica.

The Rusconi Marble Masterpiece and the replica of the altar of St Marie's Cathedral are both on display at the Gundagai Tourist Information Centre in Sheridan Street. Inspections can be made Monday to Friday 8 a.m.-5 p.m.; Saturday, Sunday and public holidays 9 a.m.-12 noon and 1 p.m.-5 p.m.

Visitor Information Centre



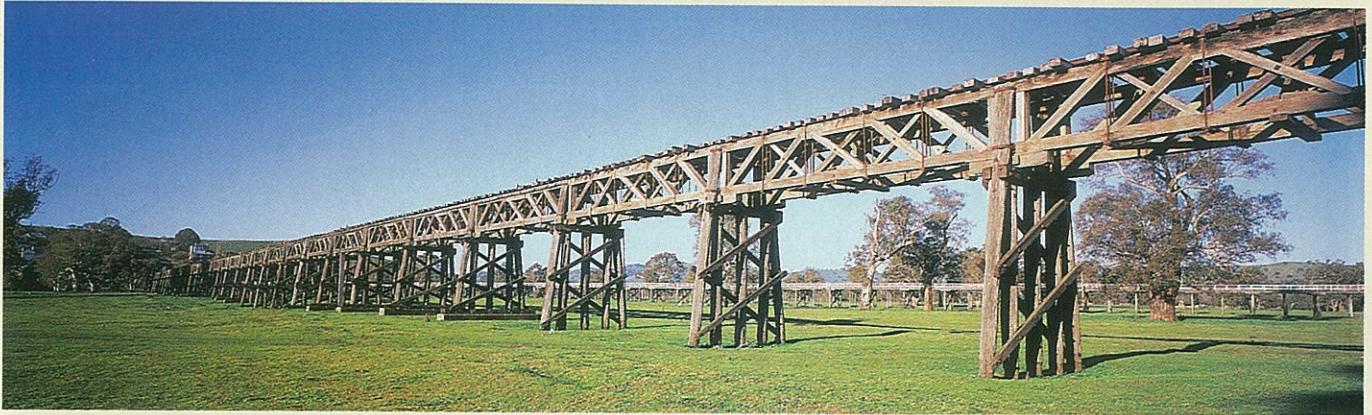
Call at the Gundagai Tourist Information Centre situated in Carberry Park, Sheridan Street (opposite the Gundagai Services Club). The centre is open seven days a week (closed Christmas Day) and houses many historical items and special attractions such as the Rusconi Marble Masterpiece, Gemstone Collection and Flood Scenes of Gundagai. Phone (02) 6944 1341 or 6944 2145, Fax (02) 6944 1409.



- Modern and traditional custom furniture
- Restoration and repair • Object D'Art

GREG WARDROBE

LUKE STREET, SOUTH GUNDAGAI
FAX/PHONE (02) 6944 1586
STD FREE CALL 1800 675 001



BRIDGES A SPECIAL FASCINATION

The longest wooden bridge structure ever built in Australia spans the mighty Murrumbidgee River at Gundagai.

This is the Prince Alfred Bridge, built in 1866. The bridge was formally opened in October, 1867, although not completed until 1869. The opening drew people from all over the region. North and South Gundagai had always been at loggerheads, but when brought together by the bridge such a scene was created that it took all the local police as well as visiting constabulary and the military to settle the disturbance.

The bridge formed part of the Hume Highway until replaced by the new Sheahan Bridge 110 years later. The bridge, together with the adjacent historic

railway bridge, built in 1901 and opened in 1903, has been classified by the National Trust as a structure whose preservation is essential to Australia's heritage. The railway line closed in 1986. The two bridges provide a special fascination for visitors to Gundagai.

Disastrous Flood

The original Gundagai was surveyed on the wide alluvial flats on the north side of the Murrumbidgee. In 1843 a post office was opened and there were four hotels, several stores, a blacksmith, a school, twenty houses and numerous tents.

On the night of June 23, 1852, the flooded Murrumbidgee River raged through the small township of Old Gundagai, drowning 83 of the 250 inhabitants and destroying 71 buildings.

Many people were saved by Aborigines living in the area, with the hero of that great flood being Yarri, a local Koori from the Wiradjuri tribe.

Throughout the night Yarri continued to ride the one and a half kilometre-wide roaring and raging river as he crouched on his knees on a thin curved bark canoe. Dodging logs that were racing down in the current, and guided by cries of people struggling for their lives, Yarri found his way through the darkness and rescued one after another from rooftops and the branches of trees.

After the 1852 disaster the main township moved to its present position on the slopes of Mount Parnassus, and the view from the top, looking out across that vast flood plain, provides a ready opportunity to visualise the raging river carrying away Old Gundagai.

Visitors are able to call at the Gundagai museum and see some of the old coins and crockery recovered from the site of the flood, and the fascinating gorgets presented to Yarri and another Koori as a reward for their heroic efforts. Inspect the sundial that the Horsley family erected as a tribute to Yarri's rescue of young Fred Horsley, and an inscribed marble plaque erected in memory of Yarri. Take time to read first hand accounts of the flood by a survivor, James Gormly.

Walk up Sheridan Lane and see the only building which still survives the flood, the 3-storey flour mill. See the memorial to Yarri unveiled by the Premier of NSW at the spot where Yarri brought to land many of those he rescued. Cross Yarri Bridge and visit the memorial on the flood plain where the National School stood before it was washed away.

Yarri was buried in the Catholic cemetery at Gundagai on July 24, 1880. Near the gates of the cemetery visitors will see the black marble headstone which was erected in memory of Yarri by the Tumut-Brungle Aboriginal Lands Council.

Back in town, the Gabriel Gallery has a special collection of later flood inundation scenes, and for those in a reflective mood there's the opportunity to just rest awhile in Yarri Park.

Your family, your home,
your dreams.
They're all part of your
bigger picture.

Whatever your bigger picture may be, the National would like to help you work at it. To talk to us about it, call Steve Volk at Gundagai Branch on (02) 6944 1042.



©1997 National Australia Bank Limited
MN0318 (10/97)

FUJIFILM PLAZA

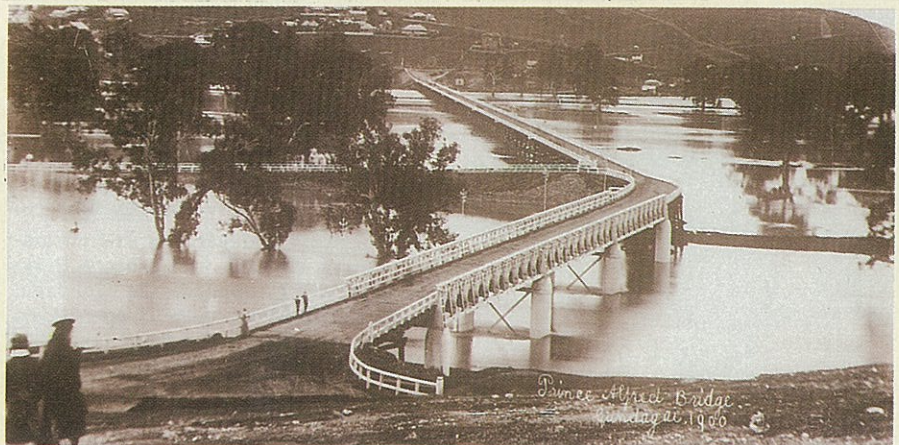
AWARD WINNING QUALITY 1 HOUR
PHOTOS WHILE YOU HAVE LUNCH
Closest Chemist to Highway
before Sydney

- ★ FAST PRESCRIPTION SERVICE
- ★ CONVENIENT LOCATION
- ★ FOR ASTHMA, PAIN RELIEF AND
'TRAVELLERS TROTS' DON'T GO PAST

CHEMIST

HORSFALL'S PHARMACY

118 Sheridan Street, Gundagai
Phone (02) 6944 1148



Prince Alfred Bridge and the Murrumbidgee in flood in 1900.



HERITAGE ARCHITECTURE AT ITS FINEST

Possibly the most imposing building in Gundagai is its magnificent Court House.

Built in 1859 this building is classified by the National Trust as one of great architectural merit.

It has been the scene of many historical court cases, including the trial of the bushranger, Captain Moonlite.

Inspection is available at times other than when court is sitting.

Two other buildings which always generate much admiration by visitors are Gundagai's St John's Anglican Church in Otway Street, and St Patrick's Catholic Church in Sheridan Street.

Built in 1861 the Anglican Church is also classified by the National Trust as a building of historical and architectural merit. St Patrick's opened in 1885.

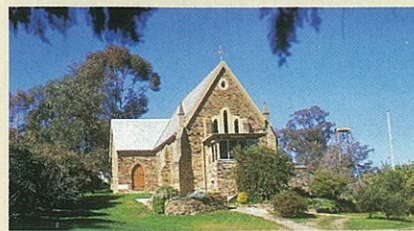
Inspections can be arranged by phoning 441063 (St John's) and 441029 (St Patrick's).

Visit grand old hotels such as the Family Hotel, where uncovered recently was the



sign beside the bar door depicting the establishment's earlier name 'Fry's Hotel', agents at the time for Cobb and Co coaches. Many fine old residences featuring century-old wrought iron and lace-work, the old flour mill constructed in 1849, and the magnificent Prince Alfred Bridge (built in 1866) and historical railway viaduct (1901) are also most interesting to visit.

The Gundagai Tourist Information Centre has a National Trust Walk Map available at a small charge. This is an interesting walk around the older streets of the town and will assist you in recognising some of the characteristics relevant to each period of building and architectural changes which have taken place.



The Family Hotel

213 SHERIDAN ST., GUNDAGAI

Phone (02) 6944 1019

Enjoy the atmosphere at Lott's Family Hotel — the hotel where good friends meet!

Call for a counter lunch — delicious meals at low prices, children especially catered for — served from 12 noon to 1.45 p.m. Monday to Friday.

We have Resch's, Carlton, Tooheys Old and Tooheys Blue on tap and a wide range of packaged beers and extensive cellar of wines for every occasion.



SKY CHANNEL — BEER GARDEN

GUNDAGAI NEWSAGENCY

122 SHERIDAN STREET, GUNDAGAI
PHONE (02) 6944 1075

See the range of newspapers, magazines, toys, stationery, cards, gifts, souvenirs and floral tributes.

NSW Lotteries
AGENT

FOCUS ON BYGONE DAYS

Gabriel Gallery

A photographic collection of great significance is housed in the Gabriel Gallery, Gundagai, featuring the work of an internationally famous photographer, Dr Charles Louis Gabriel, a distinguished resident of the town from 1887 until his death in 1927. Another resident, accountant and businessman Cliff Butcher, who established the gallery, found some thousand 4 inch glass negatives many years after Dr Gabriel died, and donated 450 to the National Library at Canberra in 1971. Photographs around the wall and on cedar writing desks in the gallery were all printed by the National Library. There is also part of Dr. Gabriel's library, his personal letters and other memorabilia.

Items relating to poets associated with Gundagai — Henry Lawson, Banjo Paterson, Jim Grahame and Jack Moses — are also displayed, together with memorabilia on songwriter Jack O'Hagan, who wrote 'Along the Road to Gundagai'.

Some of Henry Lawson's possessions, such as his walking stick, restored chair, and dictionary, together with his letters to Grace McManus who cared for him in 1920 at Coolac just north of Gundagai, are treasured gallery exhibits. So too is the first X-ray brought into country NSW by a Dr Mawson, who practised in Gundagai from 1906 (a brother of famous Antarctic explorer Sir Douglas Mawson).



But the photographs remain the focus. These are pieces of art which depict history; freezing time on life in a small country town at the turn of the century. Gundagai is immutably caught in his 'snapshots'; its streets, houses and shops are fixed permanently in photographic

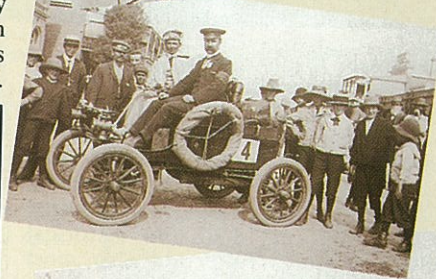
emulsion, its people turn to his lens their slightly self-conscious faces, found working or promenading or gossiping, all intrigued with the novelty of themselves in pictures.

Gabriel's own interests provide a closer focus. A 'new' hospital, the nurses he worked with, the people who were his friends, and the interior of their houses are all recorded.

Between these scenes, and various public events, are photos taken as the doctor drove around in his smart sulky, a witness to funerals, marriages, floods and elections, the coming of trains and circuses. His eye and camera give a very special and irreplaceable record of Australian provincial life two and three generations ago.

Following Mr Butcher's gift to the National Library, president of the Gundagai Historical Society, Mr O. I. Bell, also made a donation of plates which had come into his possession. From the Butcher and Bell collections the library published "Gundagai Days" featuring some 56 photos, and went on to release the more permanent publication "Gundagai Album", which used 120 photographs and was edited by Peter Quartermaine, lecturer in Australian Arts and Letters, University of Exeter. The ABC has also made a 30 minute documentary on the photos, titled A Track Winding Back.

The Gabriel Gallery is located on the first floor of Butcher Roberts Store next to the Westpac Bank in Sheridan St, and is open 9 a.m. to 5.30 p.m. Monday to Friday, and 9 a.m. to 12 noon Saturday. Admission is free.



A. L. & C. J. Evans
MILK VENDORS

Phone 6944 1925 for all Dairy
and Juice Products



**GUNDAGAI
HIGH
SCHOOL**

CARING FOR THE ACADEMIC, SOCIAL
AND PHYSICAL DEVELOPMENT
OF LOCAL STUDENTS

- EXTENSIVE RANGE OF SUBJECTS
- MODERN TECHNOLOGY
- QUALITY FACILITIES

For enrolment enquiries
Phone 6944 1233



your natural resource

Enquiries and payments
13 23 56

Emergencies and power
failures 13 23 58

National Business Centre
13 23 57

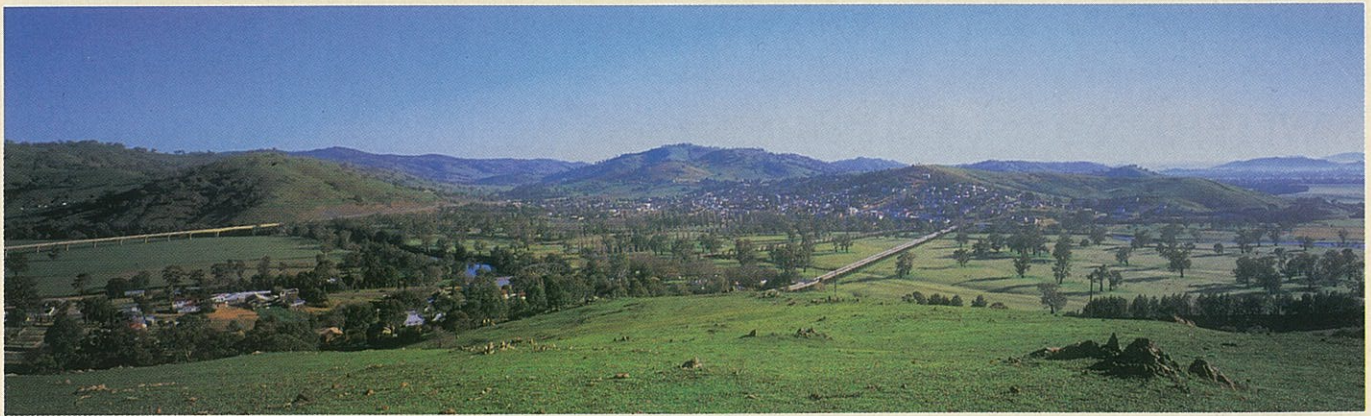
**Marine & Outboard
Repairs**

Seven Days

Ph 015489903



47 West Street,
Gundagai NSW 2722
Ph (02) 6944 1391
Fax (02) 6944 1103



FAMOUS AUSSIE QUARTET

Dad & Dave, Mum & Mabel LARGER THAN LIFE

Gundagai's fame in Australian legend, verse and song readily lends itself to the spirit of Dad and Dave. Opposite the 'Dog on the Tuckerbox' is the Snake Gully tourist complex, which enshrines in copper Steele Rudd's four most loveable characters — Dad and Dave, Mum and Mabel, symbolising the indomitable characters and spirit of our pioneers.

Superbly crafted by sculptor Aurel Ragus from beaten copper over steel frames, the statues stand on a pedestal in the park outside the complex, and evoke the character of the type of people they so truly represent. They have become a major attraction in their own right.

Dave is the typical Australian country lad, akin to Banjo Patterson's Middleton's Rouseabout or John O'Brien's Jim; those who know the bush have met Dad at many a stock sale, and seen Dave hitting the turps in many a country pub. Mum and Mabel typify the country woman of a past generation, those great hands in the kitchen who could handle any crisis about the farm work without the aid of their menfolk.

Few Australians have not heard of the characters created by Steele Rudd in his tales of life down on the farm, subsequently made into a series of successful Australian films during the pre-war era, with Bert Bailey immortalising the image of Dad. Later, as a radio serial, Dad and his family became identified with Gundagai when the characters of "Our Selection" were introduced and farwelled to a huge listening audience each day by Jack O'Hagan's 'Road to Gundagai.' The series still runs on some Australian radio stations.

Scenic Lookouts

There are a number of excellent vantage points to view and photograph the township of Gundagai and its environs.

The **Rotary Lookout at South Gundagai** offers a wonderful panorama — the result of a project by the Gundagai Rotary Club.

Magnificent vistas also reward hikers who climb the hill known as **Mt Kimo**, above the Gundagai Caravan Village.

Mt Parnassus provides the summit of the hill on which Gundagai is built. This lookout can be reached by car and provides a delightful view of the town and the rich Murrumbidgee River flats. Alternatively you may decide to reach it by way of a 3 km (round-trip) walk, which takes in historic churches, the old central school building constructed in 1858, and the first hospital in Gundagai, built the same year from local slate stone.

Reno, located 12 kms from the town on the Burra Road, affords a panoramic view of Gundagai and countryside.

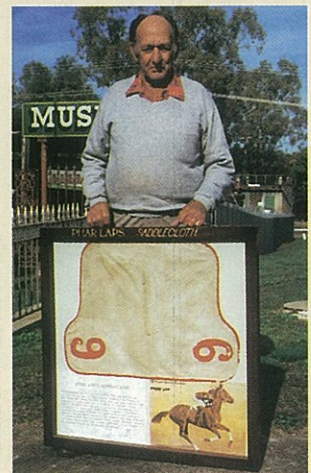


Inside the Gundagai Museum.

HISTORICAL MUSEUM

A visit to the Gundagai Historical Museum is a giant leap back in time, with a most interesting and varied collection of machinery, wagons, equipment, a T-model Ford, photographs, clothing, household items and other knick-knacks associated with Gundagai life a century or more ago.

The Museum is located in Homer St, at the rear of the Gundagai Post Office. It is open 9 a.m. to 12 noon Monday to Friday, Saturday 9 a.m. to 2 p.m., Sunday 11 a.m. to 3 p.m. or by appointment. Phone (02) 6944 1995, 6944 1361, 6944 1255 or 6944 2037. Entrance fee is adults \$2, children \$1, family concession \$5.



Phar Lap's saddlecloth — one of thousands of exhibits.

Jill's Family Af' Hair

COMPLETE FAMILY HAIR CARE SPECIALISTS,
LADIES AND GENTS PROFESSIONAL STYLING

130 Sheridan Street, Gundagai
Phone 6944 1637

Des Hamer

**Gundagai
Taxi Service**

24 Hour


(02) 6944 3427


A-C-C-O-M-M-O-D-A-T-I-O-N

WHERE TO
STAY

GUIDE

WHERE TO
STAY



**BUSHMAN'S
RETREAT
MOTOR INN** 

Incorporating the Captain Moonlite Licensed Restaurant

Your Hosts: Bob and Kay Hulls and Family

CNR. MOUNT AND CROSS STREETS, GUNDAGAI
PHONE (02) 6944 1433 :: FAX (02) 6944 1006

AUTO CABINS

"THE RESTFUL PLACE"

Ensuites in all cabins — TV — Blankets — Pillows
Towels — Tea and Coffee

PROP. MARJE ANNETTS

West Street, Gundagai
PHONE (02) 6944 1318

**Garden
Motor
Inn** 

WEST STREET, GUNDAGAI

- A Riverina Highlands retreat • Licensed dining every evening • Peaceful setting, lovely views.

"THE QUIET ONE"

**Reservations
only
1800 028292**

General enquiries (02) 6944 1744



Visit the grand old
Criterion Hotel

The friendly staff at the Criterion
would love to see you

Accommodation — Bar (6 beers on tap)

Whilst in the bar take a look at the mural of Moonlite
and other Bushrangers

Sheridan Street, Gundagai
Phone (02) 6944 1048



POETS' RECALL
Motel & Licensed Restaurant

☆☆☆☆
Conference &
Wedding
Facilities
Enquiries welcome.

Cnr. West & Punch Sts
GUNDAGAI
NSW, 2722
Phone (02) 6944 1777
Fax (02) 6944 2111

★★★★

**GUNDAGAI
CARAVAN VILLAGE**

JUNEE ROAD — PHONE (02) 6944 1057

- ENSUITE, drive-thru sites.
- NEW modern cabins.
- MODERN on-site vans, ensuite.
- GREAT camping areas.
- KIOSK and LPG.
- AUTOMATIC laundry.
- COACH tours welcome.
- FREE undercover BBQ.
- CHILDREN'S playground.
- WALK to shops.
- PETS by arrangement.
- GROUP discount.

NEXT DOOR TO 18 HOLES GOLF COURSE

**ADJACENT TO OLYMPIC
POOL**

2nd exit into Gundagai, then 1st right

Relax and stay at the
**Gundagai
Motel** 

PHONE
(02) 6944 1066

CNR. WEST & SHERIDAN STREETS

Comfortable units, all facilities, direct dial
phones, adjacent to Services Club, Bowling
Club, 18 holes golf course, swimming pool.

FAX (02) 6944 2095



GUIDE D-I-N-I-N-G

ALL THE BEST PLACES TO EAT IN GUNDAGAI



McDonald's Family Restaurant

(Owned and operated by Tony and Luita Aichinger)

**FULLY AIR-CONDITIONED
PLAYGROUND, PARTIES
BLUE PHONE & CLEAN REST ROOMS
OPEN FOR BREAKFAST FROM 6 A.M.**

Adjacent to Hume Hwy, South Gundagai
Phone (02) 6944 3322

GUNDAGAI DISTRICT SERVICES CLUB RESTAURANT

Chinese & Australian Meals

OPEN 7 DAYS A WEEK

Dining room open 12 noon-2 p.m., 6 p.m.-9 p.m. :: Fully licensed
Special Children's Menu :: Families welcome :: Also counter lunches

PHONE (02) 6944 1719



Brewer's Cafe and Take Away



PIZZAS AVAILABLE THURSDAY TO SUNDAY, FISH & CHIPS,
HAMBURGERS, FRIED CHICKEN, B-B-Q CHICKENS,
SMALLGOODS, FRESH SANDWICHES
Open 7 days from 8 a.m. to 8 p.m.

188 SHERIDAN ST., GUNDAGAI. PHONE (02) 6944 1059

TUCKA STATION

(THE OLD TRAIN STOP)

HUME HIGHWAY, GUNDAGAI

Coach trips especially catered for. An ideal stop-over for lunches, morning and afternoon tea. Home cooked meals in a unique, relaxed atmosphere. Breakfast from 8 a.m.
ALL ENQUIRIES WELCOME — PHONE (02) 6944 1076



Phone (02) 6944 2042

Suzies for Coffee

Light luncheons, snacks & sandwiches,
specialising in take away
sandwiches and bacon and egg rolls

Open Mon. to Fri.
8.30 a.m.-4.30 p.m.

150 Sheridan St., Gundagai

Proprietors:
Suzanne and
Richard Jones

CAPTAIN MOONLITE — BUSHRANGER

Andrew George Scott

On January 20, 1880, just before he faced the hangman's noose at Sydney's Darlinghurst gaol, Andrew George Scott — better known as Captain Moonlite — wrote "I want to rest in the grave of my friend. Gratify my last wish if you can. Do it in the cheapest manner possible. I have one hour to live."

It took 115 years to grant his last wish, but on January 13, 1995, the remains of Captain Moonlite were finally laid to rest in the Anglican section of the North Gundagai cemetery, within metres of the unmarked graves of his friends James Nesbitt and Augustus Wernicke.

Close by is the grave of Constable Edward Mostyn Webb-Bowen, who (along with Nesbitt and Wernicke) was tragically shot in the bushranging siege at Wantabadgery, between Gundagai and Wagga Wagga. Scott called him "brave Bowen".

The year was 1879. Scott, a former lay preacher, had received an early prison release for good behaviour after serving time for bank robbery. (Until death, he protested his innocence of this). He had been forced to abort his controversial public lecture on prison reform, which was to have provided his income. The country was in the grip of a devastating drought. Unemployment was high. Along with hundreds of other men, Scott and his five young friends then tramped the track from homestead to homestead staying alive as best they could.

At Wantabadgery homestead, after twice being refused work, food or shelter despite three days of rain, they drew their weapons and so began the bushranging siege which would go down in Riverina history.

This was the first known, and admitted, attempt at bushranging by these six novice bushrangers, only two of whom could ride. Over a period of three days, 35 people were taken hostage. The women, especially, were treated with respect, and all hostages were released unharmed before the final shootout between the bushrangers and troopers took place.

Scott and the other three surviving members of his party — Thomas Rogan, Frank Johns and Graham Bennett — were first tried at Gundagai and later in Sydney for shooting Constable Bowen.

The trial contained much conflicting



Captain Moonlite.

evidence and was conducted in an atmosphere of public hysteria with over 2000 people crowding the courthouse. The judge sentenced all four "to hang by the neck until your bodies be dead . . ."

After appeals, the sentences of Williams and Bennett were reduced to "hard labour for life", but Scott and Rogan were hanged and buried in Sydney's Rookwood cemetery in unmarked graves. It was not until 115 years later that the final chapter in the life of Andrew George Scott was written and he was laid to rest, near his friends, in Gundagai.



Picnic Facilities

Harold Heydon Park, on the corner of Byron and Landon Streets in Gundagai, offers an idyllic setting for a barbecue. Framed by poplar and elm trees, the park has wood burning barbecues, picnic tables and seats.

Excellent facilities have also been developed at Yarri Park, adjacent to Morley's Creek at the corner of Homer and Landon Streets. These facilities include electric barbecues and toilets.



The Gundagai-Adelong Racing Club boasts around twelve race meetings a year on what is fondly called "The Royal of the Riverina" Racecourse.

ENJOY OUR LOCAL FESTIVALS

The Dog on the Tuckerbox annual festival is held every year in November.

It is a three day event. Major activities include:

- **FRIDAY:** The Snake Gully Cup race meeting.
- **SATURDAY:** Day two of the race meeting; entertainment at Showground; sports dinner at Services Club with sporting celebrities as guest speakers.
- **SUNDAY:** Traditional bush breakfast with the Dog on the Tuckerbox with lots of entertainment.

Another event often held in Gundagai is the state and national Carriage Driving Championships.

COOLAC'S FESTIVAL OF FUN

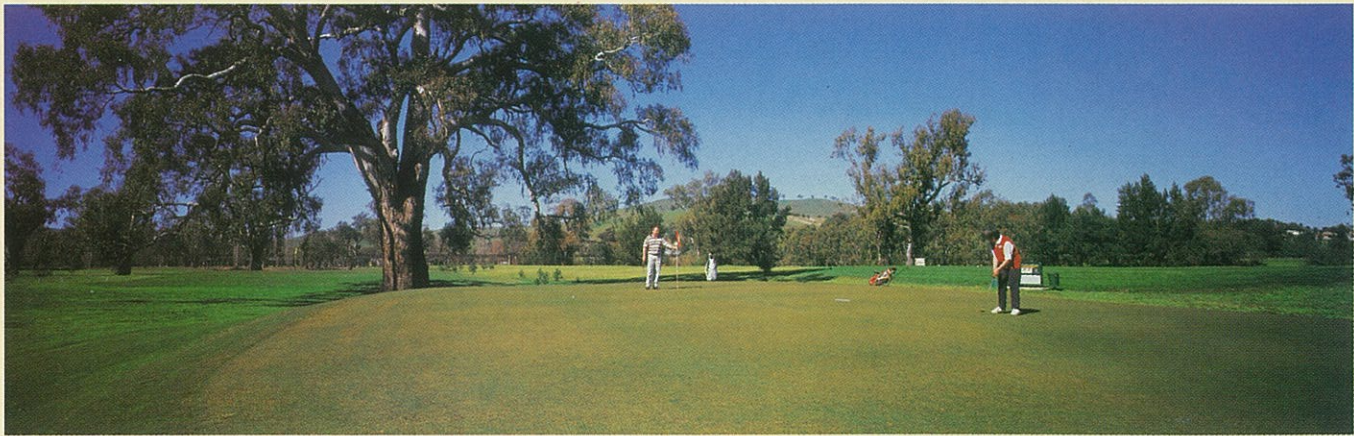
The Coolac Festival of Fun is held February to mid-March annually, "nine miles from Gundagai".

A mixture of outdoor concerts 'under the stars', comedy, community events, exhibitions, a fabulous food focus weekend, showcasing the region's excellent produce and national competitions including the famous Bald Archy Prize and the Write Archy Awards.

Contact the Coolac Festival, The Old School House, Coolac 2727. Telephone (02) 6945 3240.

Call at our shop and try the best country style Meat Pies, locally baked Party Pies and Sausage Rolls
OPEN SEVEN DAYS A WEEK
GUNDAGAI BAKERY
 184 SHERIDAN STREET :: PH. (02) 6944 1192





A new 18 hole grass green course is the pride of Gundagai's golfing fraternity.

SPORTING FACILITIES

Fishing, boating, bowls, golf, tennis, swimming and squash are just some of the outdoor activities to be enjoyed in Gundagai.

The Murrumbidgee attracts fishermen from many places not blessed with a large river. Nearby also is the Tumut River, and the junction of the two is a favoured spot for trying your luck. The cold water from the Snowy Scheme dams enables the Murrumbidgee at Gundagai to provide a plentiful supply of trout, whilst Murray Cod, Yellow Belly and Bream are in their favourite haunts.

There is a boat ramp close to the Gundagai Caravan Village.

Other excellent fishing streams in the Riverina Highlands include the Goobragandra and Adjungbilly, whilst anglers also enjoy good catches from the Blowering, Jounama, Talbingo and Burrinjuck Dams.

The picturesque 'Bidgee Banks Golf Course nestles between the gums on the banks of the Murrumbidgee River and two creeks which meander their way westward along the riverflat.

The 18 hole grass green course, which measures 5409 metres in length, has a par of 70 and was officially opened in April, 1995.

Golfers are provided with a layout which features an extremely interesting and



Fishing is a popular pastime in the Gundagai district.

unique blend of challenging and innocent holes. In most cases distance is generally not a premium during the round. However, the design and natural features of the course will undoubtedly fully test the skill and ability of all golfers.

All sporting facilities in the town, including the Olympic pool, are within walking distance from the main street, and include not only golf, but bowls (two greens), tennis, squash, football, cricket and hockey fields.

Visitors are welcome at Gundagai District Services Club Ltd

SHERIDAN ST.,
GUNDAGAI

PHONE
(02) 6944 1355

Open 10 a.m. daily. Full bar facilities. Latest gaming devices.

RESTAURANT — AUSTRALIAN AND CHINESE CUISINE

LUNCH 12 noon-2 p.m. :: DINNER 9 p.m.-9 p.m.

GOLF: 18 holes, picturesquely set along the banks of the Murrumbidgee River. Play a round of golf on the challenging course. LAWN BOWLS :: FUNCTION SPECIALIST: Weddings, Birthdays.

Information for members and guests

T. J. BATES, Secretary/Manager



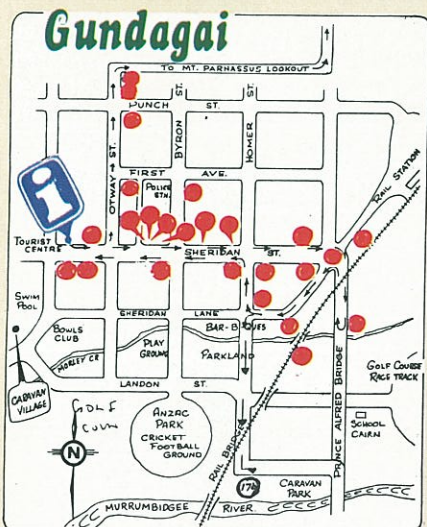
A TWO FOOT TOUR OF HISTORIC GUNDAGAI

A pleasant 2km stroll viewing many historic points of interest starts and finishes at the Gundagai Tourist Information Centre:

- After viewing **Rusconi's Marble Masterpiece, the Gemstone Collection and Historic Photographs** at the tourist centre.
- Proceed up **Sheridan Street on the left-hand side, walking past Carberry Park**, named after a very popular citizen and shire President for 29 years.



- **The Gundagai Theatre** erected in 1928 by Gundagai Masonic Lodge with the Temple at the rear. Masonry commenced in Gundagai in 1866.
- **The Family Hotel**, built in 1858. Uncovered recently is the sign beside the Bar door proclaiming 'Fry's Hotel', agents at the time for Cobb and Co coaches.
- **Commercial Banking Co of Sydney**, now the National Australia Bank. An outstanding building, this bank was opened in 1877.
- **The Gundagai Galleries on the first floor of Butcher Roberts store beside the Westpac Bank.** The **Dr. Gabriel Gallery** contains hundreds of photographs of early Gundagai.
- Walkers will notice the old slate wall leading up to the historic former Jail area — not open for inspection.
- The majestic **Gundagai Court House**, built in 1859, with the Boer War monument standing at the top of the steps.
- **The magnificent Catholic Church, St Patrick's**, opened in 1885.



- **The Rural Lands Protection Board** building, now remodelled, is where Frank Rusconi began his marble masterpiece. Visitors will note the local slate stone used at the entrance.

- In this area stands **the Cenotaph**, designed and built by Mr Rusconi.

- **'Rusconi Place'** is directly behind the Cenotaph. This is a dedication to Mr Rusconi for his work and artistry with marble.

- **"Araluen"**, the house on the corner, is where Mr Rusconi completed the Masterpiece, and had it on display for many years.

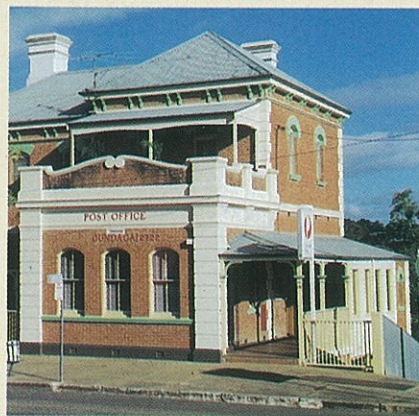
- **Prince Alfred Bridge**, built in 1866, is one of the longest wooden traffic bridges in Australia. From here view the cairn on the flood plain indicating where the first school was built in Gundagai. The town and school were washed away in the 1852 flood. 83 people lost their lives during the flood.

- View the historic **railway bridge**, built in 1901 and opened in 1903.

- **The old flour mill**, the only building left standing in the flood area after the 1852 flood. The mill was constructed in 1849.

- **The Gundagai historic museum.** An interesting collection of historic items of Gundagai, including photographs, clothing, machinery, wagons, T-model Ford and much more.

- **The "Rose Inn" cairn**, marking the site of Gundagai's first building, a public house which was conducted by Thomas Lindley at the time of the disastrous flood in 1852.



- **The Gundagai Post Office and residence**, constructed in 1879. The manual telephone exchange commenced in 1908. Gundagai had the last official 'Pony Express' to deliver mail, a service which ceased in 1984.

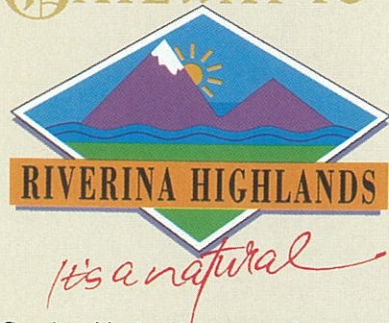
- Just past the **Royal Hotel**, the decorative entrance to **"Surrey"**, a private home built about 1880 by Mr Billie Payne, a Cobb & Co coach driver.

- Move on down Sheridan Street to the **Criterion Hotel** and view the paintings of the bushranger holdups and the 1852 flood scenes.

- Continue down Sheridan Street to No. 244. The restoration work given to this residence is quite a revelation.

- Opposite the tourist centre, walkers may inspect the **Service Club dining room**. This section of the club was erected in 1870 as a flour mill. Visitors will be amazed by the thickness of the walls, built with local slate stone. In the foyer interesting photographs provide more interesting history about Gundagai.

GATEWAY TO



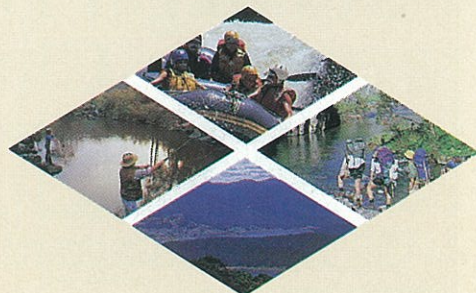
Gundagai is the ideal centre from which to discover the beauty and recreational activities of the Riverina Highlands, taking in such towns as Tumut, Adelong, Batlow, Talbingo, Tumbarumba, Khancoban and Cabramurra.

One day tours from Gundagai provide the opportunity to visit orchards and vineyards, take a first hand look at goldmining heritage, huge timber plantations, historical huts, lakes and rivers, the Snowy Mountains Scheme and its power stations, and enjoy picturesque parks and gardens, the Kosciuszko National Park with its magnificent flora and fauna, the Mt Selwyn ski resort, Yarrangobilly Caves, waterfalls, trout farms, superb fishing, the Hume and Hovell walking track, and plenty more.

The adventurous will find plenty to excite them in the form of white water rafting, canoeing, waterskiing, snow skiing, abseiling, flying and caving, whilst a more leisurely pace can be enjoyed on foot or on horseback.

There are two routes to Tumut (via Brungle or Gocup) and from there it's well worth the trip to Lake Blowering and Lake Talbingo where the scenery is spectacular. At Adelong, the Reefer Battery at the Adelong Falls provides an opportunity to step back into the past and follow the goldiggers' footsteps. At Batlow, visit charming apple, pear, cherry, stonefruit and berry orchards which pattern the hills around the town, and also some of the State's largest native and softwood forests. The Batlow Fruit co-operative is one of the largest fruit storage and packing complexes in NSW, whilst the Mountain Maid factory is famous for its fruit and vegetable products.

A shorter Tumut-Batlow-Adelong horseshoe-shaped trip can easily be extended into one also encompassing Talbingo, Kiandra and Tumbarumba. Pick up a Riverina Highlands brochure from the Gundagai tourist centre.



MURRUMBIDGEE RIVER TRIP

Travel along the Hume Highway north to Coolac, turn right to Gobarralong bridge (15kms), cross the Murrumbidgee, and follow it north through 'Gunnong Jagrawah' (at the homestead you will see the grave of 'Dark Jewel', the greatest brood mare Australia has produced).

Following the river north, you pass through 'Hopewood', thence through 'Warilla' and cross the Murrumbidgee again at Jugiong.

After quenching your thirst at Jugiong's historic Sir George Tavern, drive south on the highway for 7 kms to the cairn on the roadside marking the spot where the bushrangers Gilbert, Hall and Dunn held up the mail coach carrying a large amount of gold from the Gundagai diggings. Sergeant Parry was shot dead in this encounter. (The graves of Sgt Parry and Const. Webb-Bowen, shot in a later encounter with bushrangers, are in the Anglican portion of the Gundagai cemetery). Turn left at this spot and go to the river through 'Cooinee' and 'Gobarralong' properties, coming out at the Gobarralong bridge again.

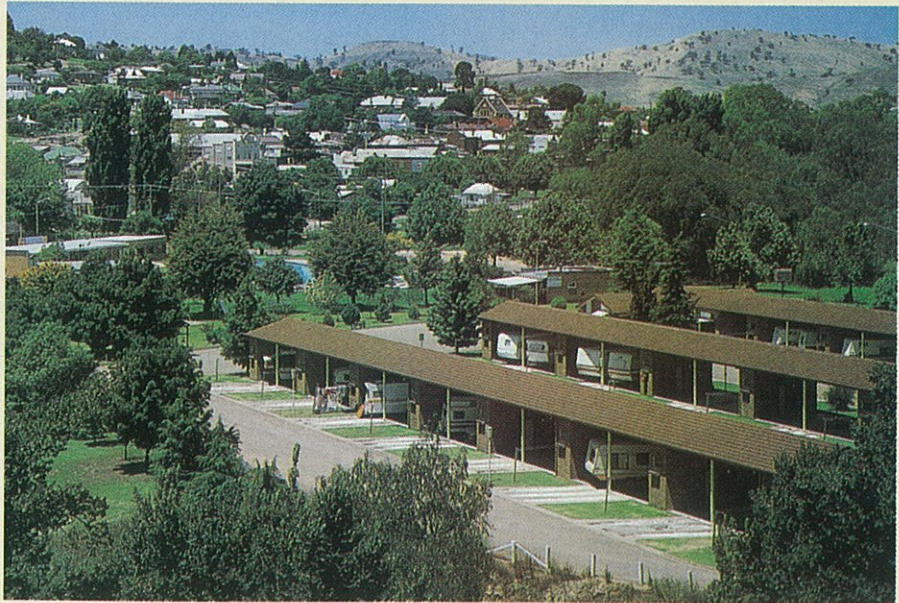
Alternatively, upon crossing the Murrumbidgee at Gobarralong, follow the bitumen to Adjungbilly. At the Tumorama Road junction turn right, travel about 15 kms and turn right again to Brungle, down the Brungle Creek valley — a delightful drive. Return to Gundagai via the Brungle Bridge, or drive into Tumut and return through Adelong.

Burrinjuck is another great day trip — the state's first effort at water conservation and one of the dams which enabled the M.I.A. to develop. On the way home call in at Jugiong and look over the South West Pumping Station.



EMERGENCY SERVICES

DOCTOR	6944 3444
DOCTOR	6944 1333
DENTIST	6944 1126
HOSPITAL	6944 1022
AMBULANCE	000
POLICE	6944 0499
FIRE BRIGADE	6944 1077
N.R.M.A.	6944 3099



Gundagai's Caravan Village.

Accommodation

Gundagai has an excellent array of accommodation establishments, ranging from motels, hotels, cabins and caravan parks. The 3½ star Gundagai Caravan Village caters for caravans only with 48 sites and 4 to 6 berth on site vans available. Each site has an individual shower and toilet, all sites have power and TV connections and sullage disposal as well as a host of other first class amenities. Phone 6944 1057.

Clubs and Hotels

The Gundagai District Services Club is situated in Sheridan Street, near West Street, and is open seven days a week (closed only Good Friday and Christmas Day). Its modern facilities include a dining room with Chinese and Australian meals, squash courts, indoor bowls, billiards and snooker. The dining room opens from 12 noon to 2 p.m. and from 6 p.m. each evening, and children are welcome. There is also a snack-bar and take-away service.

The Gundagai Sports Club is situated at the corner of West Street and Sheridan Lane.

Gundagai also has six licensed hotels, with other establishments at Jugiong, Coolac and Tumblong.

All Gundagai hotels — the Royal, Gresham, Criterion and Family in Sheridan Street, and the Hume and Star at South Gundagai — boast a friendly clientele and serve counter lunches.

The Sir George Tavern at Jugiong, 40 kms north of Gundagai on the Hume highway, is a declared Historical Inn. Built in 1853 it has been in the hands of the Sheahan family since its foundation.

The Coolac Hotel, 20 kms north of Gundagai on the Hume Hwy, and the Adelong Crossing Hotel 13 kms south of Gundagai, are old established pubs where there is also a friendly welcome for the tourist.

Service Clubs

LIONS: Meets second and fourth Mondays at the Gundagai District Services Club.

SOROPTIMIST: Third Tuesday at 7 p.m. Phone (02) 6944 1624.

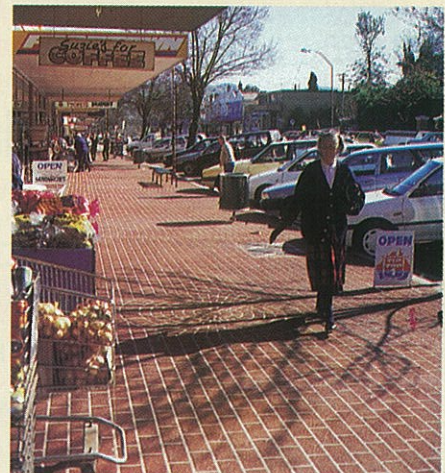
Transport Services

All major coachlines, such as Fearnese, Firefly, McCafferty's and Greyhound arrive and depart daily from the Gundagai Tourist Information Centre, providing services to all interstate capitals, also Canberra and Wagga.

Makeham's Bus Service to Wagga and return operates Monday to Friday.

For reservations and enquiries contact the Gundagai Tourist Information Centre (02) 6944 1341 or 6944 2145.

Countrylink services from Sydney and Melbourne arrive and depart every day except Saturday (connects at Cootamundra).



Sheridan St., Gundagai. The town centre boasts a busy shopping centre servicing the needs of locals and visitors alike.

B-U-S-I-N-E-S-S-E-S & S-E-R-V-I-C-E-S



GUNDAGAI
ACN 059 201 795

Specialists in all Real Estate,
Livestock, Wool & Rural Supplies

Phone 6944 1155, a.h. 6944 1300, 6944 1317



SOUTH GUNDAGAI

District distributors for Mobil Oil Australia Ltd

*Want a better deal with your
fuel supplies? See us now
for a top fuel delivery service.*

- Prompt, efficient delivery in modern, fully metered bulk delivery vehicles.
- Full range of quality Mobil fuels, oils and greases.
- Highly competitive prices and good terms.

We also supply the following locally owned service stations:
Laurie Smith Motors, West St. Auto Port, the Dog on the Tuckerbox.

Phone (02) 6944 1182, a.h. 6944 1793

D. J. LYNCH ENGINEERING

CHARLOTT STREET, SOUTH GUNDAGAI

For all types of Steel Fabrication and
Building (Rural and Commercial),
All Steel Supplies,

Machinery Equipment and Repair,
Aluminium Irrigation Equipment Repair.

PHONE (02) 6944 1188

- Check out the ★ Camping supplies
★ Gas refills and fittings ★ Hardware
★ Cam Corders and Cassettes — plus
★ Large range of music for all tastes

Wells Plumbing & Appliances P/L

(OPPOSITE THE PICTURE THEATRE)

GUNDAGAI — PHONE 6944 1865

B. J. & D. A. SMITH

EAGLE STREET, SOUTH GUNDAGAI

All Mechanical Repairs,
Welding & General Engineering

Phone (02) 6944 1494



**Butcher Roberts
Pty Ltd**

Mitre 10 Home Centre

SHERIDAN STREET, GUNDAGAI — 6944 1722
Gifts, Garden, Homeware, Heating and Camping Gear

Mitre 10 Hardware Centre

BYRON STREET, GUNDAGAI — 6944 1187
Building Materials, Rural supplies, Tools, LPG Gas,
Sporting and Fishing Equipment.

The Tucker Box

SHERIDAN STREET, GUNDAGAI — 6944 1448
Your Foodmaster Supermarket and Discount Liquor

**MIKE KINGWILL & CO.
REAL ESTATE**

- FOR ALL ★ RESIDENTIAL SALES
★ RURAL SALES
★ RENTALS
★ AUCTIONS

PHONE GUNDAGAI (02) 6944 3443
MOBILE 0418 693 076, FAX (02) 6944 2028



Nothing you need . . .
Everything you'll want . . .

For gifts, cane jewellery, mounted
posters, rugs, English china,
stoneware, basketware, glassware,
pots and plants and much much more.
Photographic work.

Ask about our photographic services
for weddings and special occasions.
Casual accommodation.

Sheridan St., Gundagai

PHONE (02) 6944 1508, A.H. 6944 1091

**VISIT A GENUINE OLD-STYLE
Country General Store
RIGHT ON THE HUME HIGHWAY**



**D. H. ROBERTS PTY LTD
COOLAC**

PHONE (02) 6945 3208 :: FAX 6945 3296



POINTS OF INTEREST

Tourist Centre	D-6
Rusconi Marble Masterpiece	D-6
Historic Museum	E-7
Rusconi's Workshed & Cenotaph	E-6
Historic Prince Alfred Bridge	E-7
Railway Bridge	E-7
Historic Courthouse	E-6
Old Catholic Church	E-6
Historic Jail	E-6
Criterion Hotel (Painting)	D-6
Gundagai Galleries	D-6
Arts & Crafts Centre	D-6
Historic Old Hospital Building	D-5
Old C. of E. Church	D-5
Mt. Parnassus Lookout	E-5
Cairn Showing First School	F-8
Rotary Lookout	F-10
Charles Sturt Cairn	E-8
Ambulance Station	C-3
Hospital	C-3
Police Station	D-6
Railway Station	F-6
NRMA Garage	D-6
High School	C-5
Primary School	E-3
Catholic School	E-6
Pre-School	D-6
Shire Chambers	D-6
Sports Club	D-6
Services Club	D-6
Showground	G-7
Racecourse	G-7
Rodeo Ground	G-7
Old Mill	E-7
Theatre	D-6

STREET DIRECTORY

Brydon Street	E-6
Camp Street	G-3
Camphor Lane	E-10
Camphor Street	D-12
Carrig Place	D-3
Cross Street	C-11
Dodd Street	G-4
Eagle Street	E-10
Ferry Street	C-10
First Avenue	E-6
Francis Avenue	B-5
Gilmore Lane	E-4
Hanley Lane	F-6
Hermans Street	G-6
Homer Street	E-6
Judy Street	D-4
Luke Street	D-10
Lawson Street	D-3
Middleton Drive	E-8
Middle Street	D-11
Moon Street	G-5
Mount Street	D-4
Moses Street	D-4
Neil McInerney Street	E-3
Nicholls Avenue	C-4
Nurse Murray Road	D-4
Otway Lane	E-5
Otway Street	D-6
O'Hagen Street	C-3
Ovid Street	G-6
Pope Street	G-6
Purple Street	D-12
Punch Street	D-12
Ridge Street	D-9
Sheridan Lane	D-6
Sheridan Street	D-6
Short Street	F-3
South Street	C-12
Spring Street	G-2
Stafford Street	B-5
Tom Street	D-10
Tor Street	D-4
Tumut Street	E-9
Virgil Street	F-6
West Street	D-6
William Street	D-3

ACCOMMODATION

Caravan Village	C-6
Caravan/Camping Ground	E-8
Sheridan Motel	D-6
Gundagai Motel	C-6
TV Motel	C-6
Bushman's Retreat Motel	C-11
The Poets Recall Motel	D-5
Royal Hotel	E-6
Criterion Hotel	D-6
Gresham Hotel	E-6
Family Hotel	D-6
Hume Hotel	E-9
Star Hotel	D-9
Auto Cabins	D-4
Garden Motor Inn	D-4



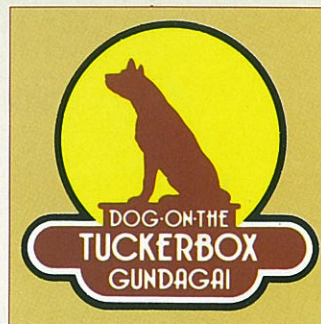
Visit the nationally famous Dog on the Tuckerbox

THE MOST POPULAR SPOT ON THE HUME HIGHWAY

Take a break.

Relax amongst pleasant surroundings.

Say G'Day to an old mate, Australia's most famous icon . . . "True Blue"!



Tasty tucker.

A wide range of gifts and souvenirs for your selection.

Courteous BP driveway service.

Dog on the Tuckerbox Tourist Centre Hume Hwy, 5 miles from Gundagai

Telephone (02) 6944 1450 — Fax (02) 6944 3032