

**AUSTRALIAN HISTORIC  
ENGINEERING PLAQUING PROGRAMME**



CANBERRA DIVISION

**REPORT ON  
THE UNVEILING CEREMONY  
FOR THE**

**WOOMERA ROCKET RANGE**

**NATIONAL ENGINEERING LANDMARK**



**Woomera Village  
Saturday, 2 October 1999**

WOOMERA ROCKET RANGE  
NATIONAL ENGINEERING LANDMARK PLAQUES  
UNVEILING CEREMONY REPORT



### Introduction

During the visit of the National Committee on Space Engineering (NCSpE) to the Woomera Rocket Range in October 1998, a discussion between the then-Chairman Dr Gordon Pike and the former Secretary of the committee Robert Breen, led to agreement that the range be nominated for an award under the **Australian Historic Engineering Plaquing Programme** of the Institution of Engineers, Australia (IEAust). In June 1999, a nomination was submitted for a National Engineering Landmark (NEL) award by the Canberra Division of the IEAust.

The National Committee on Engineering Heritage (NCEH) advised of the approval of the nomination in July 1999 and the plaques were ordered and delivered to Woomera by early September. The unveiling ceremony was held on Saturday 2 October 1999.

The nomination and ceremony process was unique to the Plaquing Programme in that it was initiated by an IEAust national committee, raised by a division heritage panel on a site in the jurisdiction of another and involved the unveiling of the two NEL plaques separately to cater for all politicians and IEAust dignitaries present at the unveiling ceremony.

This is the report of that ceremony as required by the **Guide to The Australian Historic Engineering Plaquing Programme**, Page 21.

### Planning

Because of the nature of the nomination the responsibility for organising the unveiling ceremony fell to the administrator of the NCSpE, Mrs Trish Grice. Mrs Grice drew up a list of invitees and sent out invitations - see sample at Attachment A - but as the date set down for the ceremony drew closer, it became apparent that her workload would not allow her to give the task the attention it required. Accordingly she asked the author, Robert Breen, to make the appropriate arrangements.

A site visit was not practical but as the author had a good understanding of the planned location of the cairn for the plaques, this did not prove to be a problem. From responses received it was possible to draw up a draft Order-of-Service for the ceremony and work out who would be doing what.

To provide appropriate unveiling roles for the two local politicians, the SA Division President and the NCSpE representative, it was decided to unveil the two plaques separately. On the day this worked well.

### Arrangements

A program for the ceremony was drafted and, after some refinement, printed (see Attachment B). Speakers was contacted and provided with a copy of the draft program, a guide to how long they should speak and material to assist them in compiling their addresses.

Contact was established with Woomera people and arrangements made for:

- the mounting of the NEL plaques;
- the provision of a speakers' lectern and rostrum, public address system, and 50 chairs;
- publicity for the ceremony through the local newspaper, the **Gibber Gabber**.

Local people responded to these requests with great enthusiasm.

Contact was made with the Port Augusta ABC office and material was faxed to it to enable news items on the event.

The NCSpE was to visit Woomera again on the 1999 October long weekend in conjunction with the Australian Space Research Institute (ASRI) which planned to launch several research rockets. The latter created ABC Television interest and a recording team was at the range over the weekend. The plaquing ceremony was able to "piggy back" on this coverage.

As the bulk of the anticipated audience was scheduled to proceed on a tour of Woomera immediately after the ceremony, no catering arrangements were needed.

An Australian flag and an IEAust banner were acquired for the ceremony site but were not used on the day as no suitable mounting facilities were available there. However the IEAust logo was clearly displayed on the front of the lectern.

### **The Ceremony Day**

The day turned out fine but there were thunderstorms predicted for the late morning and afternoon. The author arrived at the site about 8.30 am and local staff began arriving shortly after. Preparation of the site was completed by 9.30 am when participants and attendees began arriving.

### **The Unveiling Ceremony**

The ceremony commenced at 10.00 am with over 50 people attending the bulk of who were people associated with the NCSpE visit to Woomera. Although local representation was good, it was limited by the fact that many were away for the long weekend. In addition to the invited dignitaries listed in the program, Ann Beadell, widow of well known Woomera identity and surveyor Len Beadell, was present. All were acknowledged in the address by Deane Kemp, SA Division President.

The author performed the role as Master of Ceremonies and represented the NCEH. The SA Division President welcomed the distinguished guests and all those present and described the Institution of Engineers. Professor Miles Moody, whose birthday it was, represented the NCSpE and described the Australian Historic Engineering Plaquing Programme. Woomera Administrator Joe van Homelen, gave a stirring address on the past and present activities of the Woomera Rocket Range and the achievements of the Anglo-Australian Joint Project.

Barry Wakelin, Federal Member for Grey, spoke of national aspects of the Woomera project. He and Deane Kemp then unveiled the NEL plaque.

By the time Lyn Breuer, State Member for Giles, came to the rostrum, she found the previous speakers had covered all the items she had planned to include in her address. She therefore "spoke from the heart" much to the delight of her audience. Ms Breuer and Professor Moody then unveiled the information plaque.

Closing remarks were made by Deane Kemp during which he thanked all those present for attending.

### **Media Coverage**

As mentioned above the ceremony was publicised in the **Gibber Gabber** - see Attachment C. An article on the event subsequently appeared in this local newspaper - Attachment D - and in **Engineers Australia**, November 1999 issue - Attachment E.

On the morning of the ceremony the local ABC radio included news items on both the ceremony and the forthcoming ASRI launches.

Throughout the ceremony the ABC TV crew recorded the proceedings which subsequently appeared on television news and on the regular program "Snapshots".

### **Entry in Hansard**

On the evening of Monday 11 October, Barry Wakelin, Federal Member for Grey, described his involvement in the ceremony in the House of Representatives in Canberra. A copy of the entry in **Hansard** appears at Attachment F.

### **Photographic Coverage**

Photographic coverage was provided by local Woomera Board member Lil Andrew and visiting skilled amateur photographer Eric Day. Selected examples appear at Attachment G.

### **Post Ceremony Actions**

Following the ceremony letters of thanks were dispatched - see sample at Attachment H.

### **The Text of the Information Plaque**

The text of the Woomera Rocket Range National Engineering Landmark information plaque is shown on the ceremony program at Attachment B.

## Suggested Entry for the booklet The Historic Engineering Plaques of Australia

This appears at Attachment I.

### Ceremony an Outstanding Success

There is no doubt that the NEL plaque unveiling ceremony was a great success because:

- the weather was kind, thunder storms in the area at the time bypassed the site;
- of the participation of local politicians, IEAust office holders and Ann Beadell;
- the ready availability of an "instant crowd" in the form of the bus load of Woomera tourists organised by the NCSpE, reinforced by local people;
- the enthusiastic support of the Woomera Board and local citizens;
- the Institution, the South Australia and Canberra Divisions and the engineering profession received positive image boosts with the public at large and in particular local politicians and community groups.

Once again the IEAust's **Historic Engineering Plaquing Programme** has, in addition to providing deserved public recognition for an historic engineering site, placed the Institution's name before the public at a particular location, "forever"!



**Robert Breen**  
Nomination and Ceremony Coordinator

**November 1999**

- Attachments:**
- A Sample of Invitation to the Unveiling Ceremony.
  - B Unveiling Ceremony Program.
  - C **Gibber Gabber** article publicising the ceremony.
  - D **Gibber Gabber** article following the ceremony.
  - E Article which appeared in **Engineers Australia** Vol 71, No 11, November 1999.
  - F Copy of entry in **Hansard**.
  - G Ceremony photographs.
  - H Sample of Letter of Thanks.
  - I Suggested entry in the booklet **The Historic Engineering Plaques of Australia**.



NATIONAL OFFICE

27 August 1999

Mr Rob Breen  
National Committee on Engineering Heritage  
17 Bathurst Place  
Macquarie ACT 2614

Dear Mr Breen

### **Plaquing of the Woomera Rocket Range as a National Engineering Landmark**

The Institution of Engineers, Australia (IEAust) is one of the most respected engineering associations in the world. We have over 65,000 members and represent all disciplines and branches of engineering. The IEAust promotes and advances the science and practice of engineering and ensures the community is well served by its engineering resources.

Australians are well aware of the benefits that flow from current technological advances, many of which are acknowledged and honoured in engineering excellence awards. They are less aware of technological achievements of the past which have made possible the standard of living they presently enjoy.

The IEAust established the Australian Historic Engineering Plaquing Program to acknowledge past engineering achievements and to draw public attention to the significant contributions they have made to society and to the engineers responsible. The program fosters the pride of the general community and the engineering profession in these achievements.

The IEAust, in conjunction with the National Committee on Space Engineering will be conducting a Plaquing Ceremony at Woomera, South Australia on Saturday 2 October 1999, please see attached timetable. This plaque will recognise the significant engineering heritage of Woomera, and the Rocket Range. A copy of the nomination of the Woomera Rocket Range for an award as a National Engineering Landmark is enclosed for your information.

On behalf of the National Committee on Space Engineering, I am honoured to invite you to attend the ceremony at Woomera. This ceremony will be of historical significance and your attendance would add to what will also be a memorable day.

Could you please let Trish Grice know whether you are available to attend the ceremony by Friday 10 September. Trish's contact details are as follow:

Trish Grice  
Committee Administrator  
Engineering House  
11 National Cct  
BARTON ACT 2600  
Ph: (02) 6270 6548  
Fax: (02) 6273 2358  
email: tgrice@eol.ieaust.org.au

Yours sincerely

A handwritten signature in black ink that reads "Ian R. Tuohy". The signature is written in a cursive style with a prominent underline under the name "Tuohy".

Dr Ian Tuohy FIEAust CPEng  
Chairman  
National Committee on  
Space Engineering





The  
Institution of Engineers,  
Australia

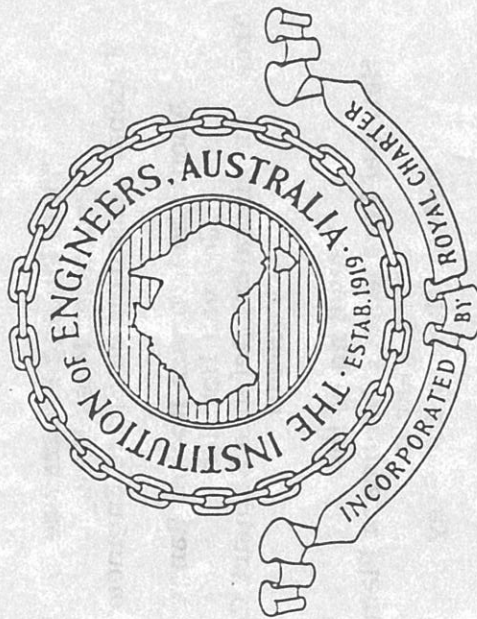
Official ceremony for the  
presentation and unveiling of a

**NATIONAL  
ENGINEERING LANDMARK**

award to the

**WOOMERA  
ROCKET RANGE**

**Woomera Village**  
**Saturday, 2 October 1999**



The Australian Historic Engineering  
Plaquing Programme  
and the  
Woomera Rocket Range

The Institution of Engineers, Australia established the Australian Historic Engineering Plaquing Programme in 1984 as a means of bringing public recognition to significant engineering works and the engineers who created them.

The programme recognises significant works at two levels, the National Engineering Landmark (NEL) and the Historic Engineering Marker (HEM). The NEL is the Institution's ultimate accolade reserved for works which have contributed to the development of Australia and the practice of engineering and are significant components of the National Estate.

The Woomera Rocket Range has been recognised as a National Engineering Landmark. The information plaque reads:

"ESTABLISHED UNDER THE ANGLO-AUSTRALIAN JOINT PROJECT FOLLOWING THE SECOND WORLD WAR, THIS RANGE AND THE ASSOCIATED WEAPONS RESEARCH ESTABLISHMENT AT SALISBURY, WERE THE LARGEST AND MOST EXPENSIVE SCIENTIFIC AND ENGINEERING ACTIVITIES EVER UNDERTAKEN IN AUSTRALIA IN PEACETIME. THE EQUIPMENT USED AND TESTED HERE WAS AT THE FOREFRONT OF TECHNOLOGY ESPECIALLY IN FINE MECHANICS, ADVANCED OPTICS, TELEMETRY AND ROCKET FUEL CHEMISTRY. THE SUCCESSFUL LAUNCH OF THE WRESAT SATELLITE FROM WOOMERA IN 1967 GAINED AUSTRALIA INTERNATIONAL RECOGNITION AND MEMBERSHIP OF THE EXCLUSIVE "SPACE CLUB."

ORDER OF SERVICE

Welcome and Opening Remarks

Deane Kemp,  
President, South Australia Division  
The Institution of Engineers, Australia

The Plaquing Programme

Professor Miles Moody  
National Committee on Space Engineering

About the Woomera Rocket Range

Joe van Homelen  
Area Administrator, Defence Support Centre  
Woomera

Unveiling of the

National Engineering Landmark Plaque

Barry Wakelin  
Federal Member for Grey

Unveiling of the Information Plaque

Lyn Breuer  
State Member for Giles

Closing Remarks

Deane Kemp  
President, South Australia Division

-----ooOoo-----

**Emergency Telephone Numbers**

Fire & Ambulance Calls	.....(08) 8673 7222 or (08) 8674 3222
Fire Station (General Calls)	.....(08) 8674 3224
State Police	.....(08) 8673 7244 or (08) 8673 7245
Hospital	.....(08) 8673 7788
Dentist	.....(08) 8671 9031
Social Worker Pt Augusta	.....(08) 8648 5060
ASPCA	.....(08) 8673 7298
Dog Control Officer/Vet's Rep	.....(08) 8673 7282
UP Church	.....(08) 8673 7024
Catholic Church	.....(08) 8673 7085
DHA Maintenance	.....(08) 8673 7730
Health Advice Services	.....1800 673 248

# Gibber Gabber

Published by the Woomera Board

Editor: Lil Andrew

Thursday, September 30, 1999

Volume 50, No. 37

Phone (08) 8674 3226 - Classified Ads (08) 8674 3227

Distributed Free to all Residents of the Woomera District

## Woomera Weather

For week ending  
Tuesday, September 21, 1999

	Max	Min	Rain
Wednesday	29.9	11.9	
Thursday	30.2	3.0	trace
Friday	26.5	15.9	
Saturday	28.1	13.8	4mm
Sunday	32.6	14.8	
Monday	32.2	20.2	
Tuesday	33.3	21.9	trace

Total Rainfall to date for 1999: 60.8mm



## Woomera National Engineering landmark plaque unveiling ceremony

On Saturday, October 2 there will be a ceremony at the entrance to Woomera Village to unveil plaques marking the Woomera Rocket Range as a National Engineering Landmark. All Woomera people are extended a cordial invitation to attend this special occasion. Assembly time is 9:45am.

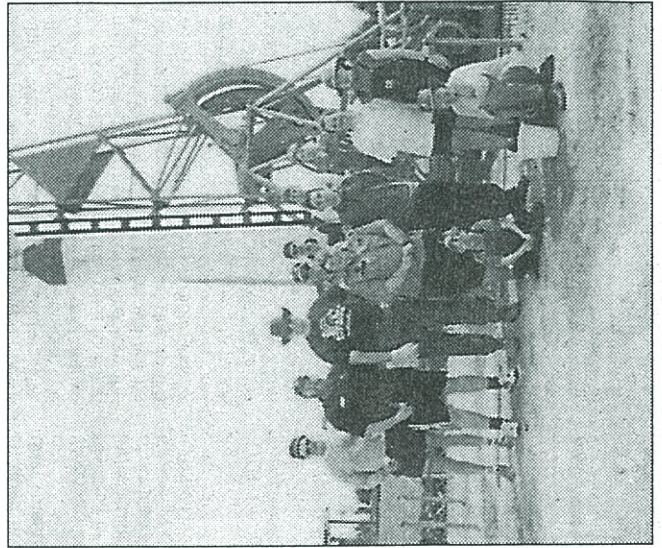
Woomera recognised as a National Engineering Landmark. The Institution of Engineers, the organisation which represents all engineering disciplines in Australia, has recognised the Woomera Rocket Range as a National Engineering Landmark.

This is the "ultimate accolade" of the Institution's historic engineering plaquing program, which brings public recognition to significant engineering works, and the engi-

neers who created them. Other national engineering Landmarks include the Sydney Harbour Bridge, the Snowy Mountain Scheme, the Great Zig Zag Railway and the Newcastle Harbour.

A ceremony will be held at the entrance to the village on Saturday, October 2, commencing at 10am to formally unveil the plaques there marking this prestigious award. Participants will include local politicians Barry Wakelin and Lyn Breuer, Woomera Administrator Joe van Homelen, Deane Kemp, President of the Institution's South Australia Division and Miles Moody of the National Committee on Space Engineering.

The organisers are keen to have as many people as possible participate in the event.



Many of the helpers that made the Landscaping of the Woomera Entrance so easy.



Damien and Michael Kellow helping plant some of the plants on Saturday near the Longtom Rocket.

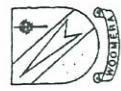
## Nominations Sought for Board Elections

Nominations are invited from residents who wish to seek election to the Woomera Board.

Three of the Board's six elected members are selected by ballot in October Saturday in October if required.

a continuous period of three months immediately preceding election day are eligible to be nominated.

Elections will be held on the last Saturday in October if required.



- Emergency telephone numbers**
- Fire & Ambulance Calls ..... (08) 8673 7222 or (08) 8674 3222
  - Fire Station (General Calls) ..... (08) 8674 3224
  - State Police ..... (08) 8673 7244 or (08) 8673 7245
  - Hospital ..... (08) 8673 7788
  - Dentist ..... (08) 8671 9031
  - Social Worker Pt Augusta ..... (08) 8648 5060
  - RSPCA ..... (08) 8673 7298
  - Dog Control Officer/Vet's Rep ..... (08) 8673 7282
  - UP Church ..... (08) 8673 7024
  - Catholic Church ..... (08) 8673 7085
  - DHA Maintenance ..... (08) 8673 7730
  - Health Advice/Services ..... 1800 673 248

# Gilber Gabber

Published by the Woomera Board

Editor: Lil Andrew

Friday, October 8, 1999

Volume 50, No. 38

Phone (08) 8674 3226 - Classified Ads (08) 8674 3227

Distributed Free to all Residents of the Woomera District

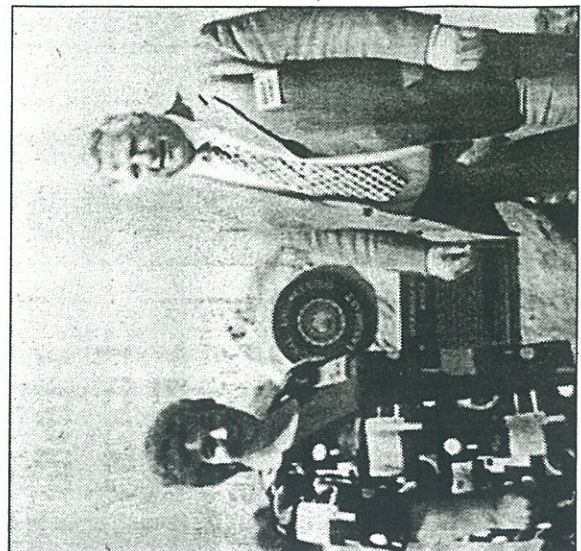
## Woomera Weather

For week ending  
Tuesday, October 5, 1999

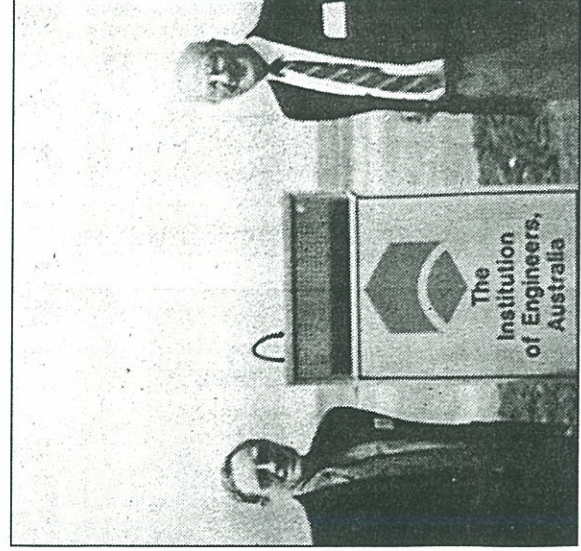
	Max	*Min	Rain
Wednesday	22.0	12.7	6.0mm
Thursday	23.4	10.7	
Friday	27.6	12.9	
Saturday	23.9	15.3	0.6mm
Sunday	22.3	10.0	3.2mm
Monday	24.9	12.5	
Tuesday	28.1	13.1	

Total Rainfall to date for 1999: 70.6mm

## Woomera National Engineering Ceremony



**Our Local Politicians Lyn Breuer and Barry Wakelin were involved in the unveiling of the plaques for the National Engineering Landmark Award.**



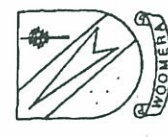
**Miles Moody pictured with Robert Breen at the unveiling ceremony. Miles will always remember this day as it was also his birthday.**

On Saturday, October 2 the unveiling ceremony was held at the entrance to Woomera Village. The unveil of the plaques marking the Woomera Rocket Range as a National Engineering Landmark.

"Woomera recognised as a National Engineering Landmark". The Institution of Engineers, the organisation which represents all engineering disciplines in Australia, has recognised the Woomera Rocket Range as a National Engineering Landmark. Mr Deane Kemp the President, of the South Australia Division of the Institution of Engineers welcomed everyone to the Ceremony. Professor Miles

Moody from the Nation Committee on Space Engineering made a speech about the Plaquing Programme. The Area Administrator Mr Joe van Homelen presented a speech about the Woomera Rocket Range. Our Local Politicians Barry Wakelin and Lyn Breuer were involved in the unveiling of the plaques.

Barry Wakelin unveiled the National Engineering Landmark Plaque and Lyn Breuer unveiled the Information Plaque. Mr Robert Breen would like to thank everyone that participated in organising the Entrance and all the work that went into making the morning a great success.



## Nominations for Board elections close today

Nominations are invited from residents who wish to seek election to the Woomera Board.

Three of the Board's six elected members are selected by ballot in October each year, and hold office for a two year term.

Members this year who are eligible to stand for re-election are Mr Kym Edwards, Dave Phillips.

One position is vacant after the resignation of Mr L Leathridge.

Applications can be obtained from the Secretary Woomera Board and must be returned to her before nominations close at 12 noon, Friday, October 8, 1999.

Any Woomera resident over the age of 18 years and has resided in Woomera for

a continuous period of three months immediately preceding election day are eligible to be nominated.

Elections will be held on the last Saturday in October if required.

### The functions of the Board are:

1. To advise the Area Administrator on matters relating to the welfare of the people of Woomera, and any matter referred to the Board by him.
2. To manage businesses, public utilities, and amenities and conduct other activities as the Area Administrator may from time to time direct.
3. To expend for the benefit of the people of Woomera, money received by the Board from various sources.

## JDFN closure ceremony



Bring the family out this Tuesday, October 12, and watch JDFN's finest stand proud before the watchful eyes of distinguished guests, the Australian Minister for Defence, Mr. John Moore, M.P., the US Secretary of the Air Force, Mr. F. Whitten Peters, and US Ambassador Genta Hawkins Holmes.

Children and adults alike will wonder at the impressive display of airpower demonstrated during the flyover of two Royal Australian Air Force F/A-18s. Immediately following the ceremony, at approximately 12:15pm go grab a bite to eat at the sausage sizzle near the Variety Store. Shop for Nurrungar souvenirs at the Booster Club Booth, while you listen to the music of the RAAF

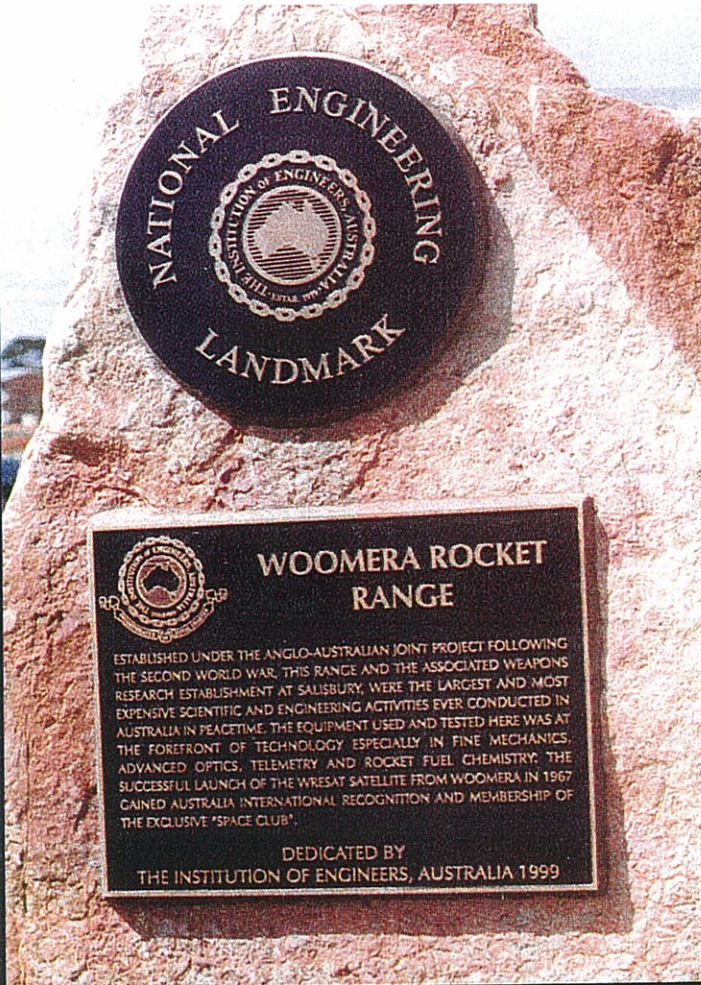
## NEWS

## Rocket Range engineering landmark

THE WOOMERA Rocket Range joined other great landmarks of engineering last month, when the IEAust recognised it as a "National Engineering Landmark" during a plaquing ceremony held at the Woomera village.

At the time the largest and most expensive single research and development engineering facility in Australia, the Woomera Rocket Range was also one of the biggest land rocket ranges in the world. The \$2.5 billion Anglo-Australian project created thousands of jobs and was the impetus that made the desert town of Woomera become a six-thousand strong community in the 50s, 60s and 70s. Many of the people who came to work on the Rocket Range – the firms and businesses servicing the facility as well as scientists and engineers – stayed on in the area and many of those who came from overseas settled permanently in Australia.

The Woomera Rocket Range brought many benefits, including international recognition of Australia as a technologically advanced nation. It also fostered a sense of national pride, with Australians acknowledging their contribution to advanced technological



This National Engineering Landmark celebrating the achievements of the Woomera Rocket Range was unveiled last month.

research and development. It brought business into the country, it generated a flow of scientific and technical brainpower and it stimulated the infrastructure development of outback South and Western Australia. It also accelerated the formation of the defence scientific community, giving Australia credence as a contributor to military weapons development.

The work carried out at the

range was at the leading edge of technology, especially in fine mechanics, advanced optics, telemetry and rocket fuel chemistry and, for awhile, Australia led the world in the automatic processing of doppler and telemetry records.

The three-stage satellite launcher rocket *Europa 1*, the British *Black Arrow* and Australia's home-built satellite *Wresat* were just some of the enterprises the Woomera Rocket Range played

host to.

Stretching nearly 2000km across Australia, from Woomera (500km north of Adelaide) north-west to Talgarno on the Western Australian coast between Port Hedland and Broome, the Rocket Range cuts a 320km wide swathe through the Australian continent.

Rob Breen, of the IEAust's Engineering Heritage Panel (Canberra Division) and co-ordinator of the Rocket Range's award nomination, said the Woomera Rocket Range could be said to be to South Australia what the Snowy Mountains scheme was to New South Wales and Victoria.

"The Snowy Mountains Scheme cost \$1 billion and involved 100,000 people. The Anglo-Australian joint project at Woomera cost \$2.5 billion and involved several hundreds of thousands of people. It helped Australia come of age as a scientifically and technologically developed nation," said Breen.

## Coordinating Olympic telecast

BY JOHN COKLEY

LOCKHEED MARTIN has placed a bid to buy 49% of the US-based Comsat Corp for about \$US1.2 billion, according to the weekly *Space News* digest.

This would take Lockheed Martin within range of being the biggest single shareholder in the worldwide communications

## Construct or Design-&-Construct

Design  
Construction  
Pavements  
Drainage, Bridges  
Warehouses  
Earthworks  
Pipelines  
Asphalt, Carparks  
Foundations  
Landscaping  
Roadworks  
Crushed rock  
Soil tests  
Structural steel  
Civil works

**B F C**

**BERNE FLEMING CIVIL PTY LTD**

Manufacturing industry specialists

**(03) 9326 6050**

## Power blackout in Sydney's CBD

LAST MONTH about two thirds of the Sydney CBD was affected by a power supply failure in the early afternoon, attributed to an equipment failure at the St Peters' substation south of the city.

Power was restored to most of the CBD within 70 minutes, with remaining areas progressively restored in the next couple of hours, according to a press statement released by the NSW energy ministry.

In the statement the day after the blackout, energy minister Kim Yeadon said energy authorities were not sure why the equipment failed and whether any changes needed to be made to backup systems.

He said a full report on the incident was expected within a fortnight of the incident.

"At that stage the NSW government will consider if further investigation is required and what measures need to be taken to avoid a recurrence," he said.

The body responsible for the Sydney CBD is the state-owned Energy Australia electricity utility.

I also refer to Alex Harris's article that appeared in the *Australian Financial Review* on 25 June 1999 in which he implores Australian corporations and government bodies to develop 'a sales focus like our livelihoods depended on it'. Mr Harris reminded us that 'global competition means competing against our trade rivals'. I put to this House a most important question that begs an answer, a question put by aquaculture industry consultant, Dr Roslyn Brandon, in her article in the *Australian Financial Review* on 28 June 1999:

Why then is the Australian Quarantine and Inspection Service set to squander one of our greatest competitive advantages by succumbing to pressure from Canada and the United States to lift the import ban on uncooked salmon products and to effectively allow the entry of exotic fish diseases (AFR 7 May 1999) not just to a level where disease pathogens may enter Australia, but to where diseased products will knowingly be allowed into Australia?

I envisage questions on notice to the Minister for Agriculture, Fisheries and Forestry to this effect. Through the World Trade Organisation, Canada and the United States are pursuing this under the guise of a trade issue, one which we should review with considerable scepticism. For Australia, this is not an issue about trade; it is about disease. I join with Dr Roslyn Brandon when, in her press release in the *Australian Financial Review* of 28 June 1999, she notes:

We cannot afford to take avoidable risks when the resultant diseases cannot be eradicated or controlled. This issue is about setting a precedent for allowing disease-bearing products to cross our borders.

Dr Brandon further notes:

Compromising on this challenge opens the Australian market as an agricultural dumping ground and invites the importation of other products with known disease (for example foot and mouth).

Dr Brandon exhorts us to rally together to protect our nation's competitive advantage—to continue to compete against our trade rivals. If we succumb, this will be the first instance where Australia has willingly allowed the importation of animal products known to be diseased. AQIS claims this is an acceptable risk.

As we consider the philosophy of globalisation in this issue, this is a dark sense of *deja vu* with the same ominous overtones facing us with respect to the present government's desire to ratify Australia as a signatory to the Multilateral Agreement on Investment. It seems this government is willing to take any level of risk, any level of surrender, in its desperate bid to satiate that insatiable appetite called globalisation. Globalisation is a profoundly erroneous doctrine because laws of nature neither recognise nor honour international agreements. Laws of nature do not discriminate between borders. Contamination is contamination, and no level of economic benefit will compensate a contaminated fishing resource.

It is ludicrous to think that, simply by accepting a higher level of risk, simply by allowing contamination of our fishing supply, there will be economic benefits which can ever balance out such environmental harm. This sales-like focus is synonymous with the MAI argument—that is, in our bid to become more competitive or more sales focused, you must be less focused on environmental imperatives as if you can

trade one off from another, as if you can barter with nature. You cannot barter with nature. Compromise nature and nature will simply cease to exist. It will be no answer to say to future generations, 'We contaminated our fish stock forever, but we raised our competitiveness for a time.' In any event, such market advantages ultimately level themselves out to a level of the lowest common denominator in which, in times of the environment, we all lose.

Like the MAI, we see the deterioration of sovereignty of Australia. At a time when we look to become a republic, we see one of the most fundamental functions of sovereignty personified in AQIS—our border protection function—being eliminated in favour of economic imperatives which themselves are based on fundamentally flawed premises. Like the MAI, this government is willing to sacrifice everything—the environment, local jobs creation, ethical imperatives and preservation of the natural law itself—just to be seen playing this Russian roulette of globalisation, pandering to the corporate world and reducing Australia to the dumping ground of contamination. I urge this House to reject this deliberate attempt to undermine border protection policies which preserve and enhance our environmental integrity.

#### Woomera: Engineering Landmark

Mr WAKELIN (Grey) (10.35 p.m.)—The weekend before last, I was privileged to attend a ceremony at the Woomera Village, as it was known. That ceremony was to commemorate the unveiling of a national engineering landmark awarded to the Woomera rocket range. I suppose it is almost beyond imagination how you award something that extends from the Indian Ocean, between Broome and Port Hedland, to the centre of Australia and acknowledge via the Institution of Engineers what has transpired there over the last 50 years or more.

Nevertheless, it was a very significant celebration of that period. What became very clear to me was the contribution probably unheralded and unknown to most Australians of Woomera to the national effort over the last 50 years, and I suppose that is partly due to the military nature of Woomera. It was a very secretive place when I was growing up and, as that military tradition remains, we do not go out there and sing it from the treetops. Nevertheless, this ceremony a week or so ago recognised Woomera and its contribution to the Australian way of life.

I will quote from the wonderful presentation prepared by Robert Breen and Trish Grice from the Institution of Engineers. They quote from Peter Morton's book *Fire Across the Desert* and I think acknowledge the expert in the area when they say:

... a flow of scientific and technical brainpower and people talented in other directions into South Australia. Some settled permanently and enriched the community. It could be said that the Woomera rocket range and Salisbury were to South Australia what the Snowy Mountains scheme was to New South Wales and Victoria. The Snowy Mountains scheme cost \$1 billion—

No doubt, in those dollar terms of that era.

and involved 100,000 people. The Anglo-Australia joint project cost \$2.5 billion and involved many thousands of people.

As time has gone on, the population at Woomera has gone from between 6,000 and 7,000 people back to around 1,000 people now. When you travel around with the very professional guided tour and look at the various sites—the launcher pads and all the paraphernalia that makes up this facility—you become aware of the enormous effort the allies put in there over the last 50 years.

It would be remiss of me not to mention one of the great founders of Woomera, the late Len Beadell. He was known and, I believe, greatly loved by many Australians all over Australia. His wife was at the ceremony and she mentioned to me that Len had been all over Australia and had spoken to over 800 groups about his exploits. Many Australians would be aware of the exploits of the Gun Barrel Highway. I think Len Beadell was one of the great founders of Woomera itself.

Tomorrow, the Minister for Defence will travel to Woomera and, with the Americans and the local people, will acknowledge in a formal way the conclusion of another chapter at Woomera—that is, the closure of Joint Defence Facility Nurrungar. It was built in 1970 and it has been there for the past 30 years.

In the few seconds I have left, I should say that Woomera has had many lives, and the American presence and contribution to that part of the world, I am sure, is greatly acknowledged by the government, by the parliament and by the local people who have shared their lives at Woomera in these last 30 years. There is new life again for Woomera, in the sense that Kistler Aerospace is looking into the future for a rocket launcher facility for the new communications age.

#### Melbourne: Western Suburbs

Ms ROXON (Gellibrand) (10.40 p.m.)—I rise tonight to invite all members, senators and other officials who are in Parliament House this Wednesday to attend an exhibition called 'Showcasing Melbourne's West' being held in the Great Hall on Wednesday between 10.00 a.m. and 5.00 p.m. It has been organised by the Western Melbourne Regional Economic Development Organisation, otherwise known as WREDO. WREDO was established in 1995 with the objective of promoting the competitive benefits of the western suburbs of Melbourne. It works in consultation with local governments and the private sector and has been extremely successful in its work.

There are over 30 contributors to the exhibition that is being held on Wednesday in the Great Hall, including exhibitions from the six local councils, businesses and government agencies. Some examples of the major organisations participating in 'Showcasing Melbourne's West' are Mobil, AGL, Orica, Powercor, the Docklands Authority, Toyota, VUT, Tenix and the cities of Brimbank, Hobson's Bay and Maribyrnong.

The aim of 'Showcasing Melbourne's West' is to display the strengths, diversity and economic capability of the region. It is to show what the west has to offer, as well as how much the west has achieved. In order to keep creating opportunities for the future of our region, we need to continue to attract new

businesses to the area. The exhibition aims to educate people about our region.

The western suburbs of Melbourne, as many of you would know, is the engine room, if you like, for the city of Melbourne. There are 20,000 businesses in the region, and in the last two years the west has recorded a business growth of 6.6 per cent. The population of 500,000 is forecast to grow by 20 per cent in the next 10 years. Forty per cent of Melbourne's industrial land is in the west. The west is a major distribution centre, with access to major transport infrastructure such as the Western Ring Road and City Link and access to major port and national railway networks. The west is within 15 minutes of a curfew-free international airport and 25 minutes from Melbourne's CBD.

Employment is still the key issue for us in our region, and it is vital that the region continues to grow and attract new investment and industry. As you would realise from the brief comments I have been able to make, the west is well positioned to continue to develop as a major powerhouse of the Australian economy.

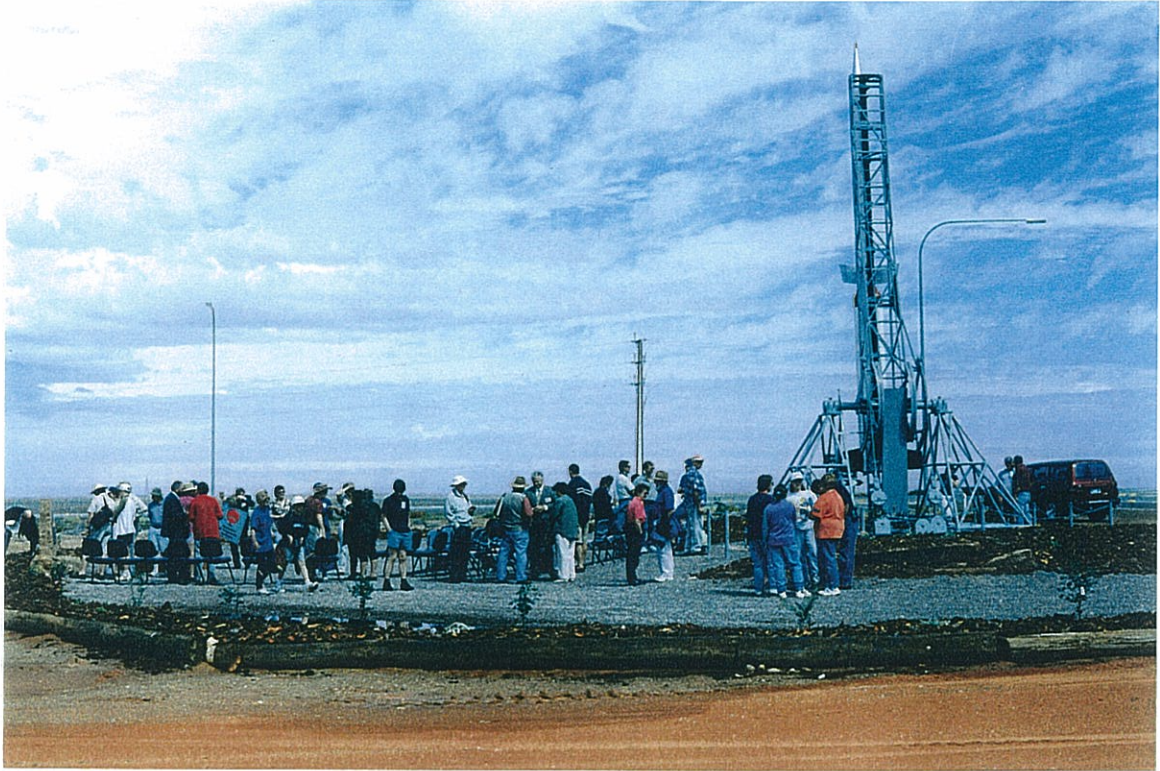
Many of you might not have been to the west of Melbourne at all or have much knowledge of the area. The overwhelming image of this region is one of petrochemical plants and a rich industrial history. Although we are proud to claim this, the west is also much more than that. It is a thriving and energetic place both to live and to work.

The exhibition is an opportunity to meet the west's industry leaders and to discuss strategies for fostering economic growth in the region. I hope many members and senators will go to this exhibition so they can see what the west of Melbourne has to offer. The exhibition is an opportunity for you to find out more about our region and to discover its rich diversity.

Although tourism is not a word that immediately springs to mind when we discuss Melbourne's western suburbs, there is a great capacity for family entertainment and daytime recreation. Scienceworks, historic Williamstown and the Footscray Community Arts Centre, just to mention a few features, are all in my electorate of Gellibrand. They are within a short drive from other western suburbs tourist attractions, such as Werribee Park—which includes an open range zoo and mansion—and are very accessible to Geelong and the Great Ocean Road via the Princes Freeway. The Maribyrnong River in the west also has the potential for tourism if it is redeveloped thoughtfully, a matter I have already raised in this House a number of times. Of course, I could not forget the Bulldogs, who will also be attending with an exhibition here on Wednesday.

I encourage all members and senators, advisers, public servants, trade officials, business people and any other interested staff, whether ministerial staff, embassy staff or others who will be around and within the House on Wednesday, to come and attend 'Showcasing Melbourne's West' and see what we really do have to offer.

CEREMONY PHOTOGRAPHS



The audience assembles at the site at the entrance to Woomera Village adjacent to the Longtom launcher static display - cairn with veiled plaques at extreme left - and ...



occupies the seating provided.



**Master of Ceremonies Robert Breen representing the National Committee on Engineering Heritage, opens proceedings and introduces ...**



**Deane Kemp, President, IEAust SA Division, who welcomes participants and describes the Institution of Engineers.**

**Professor Miles Moody representing the National Committee on Space Engineering, explains the Australian Historic Engineering Plaquing Programme.**



**Woomera Area Administrator Joe van Homelen speaks of the past and present activities of the Woomera rocket range and the achievements of the Anglo-Australia Joint Project.**

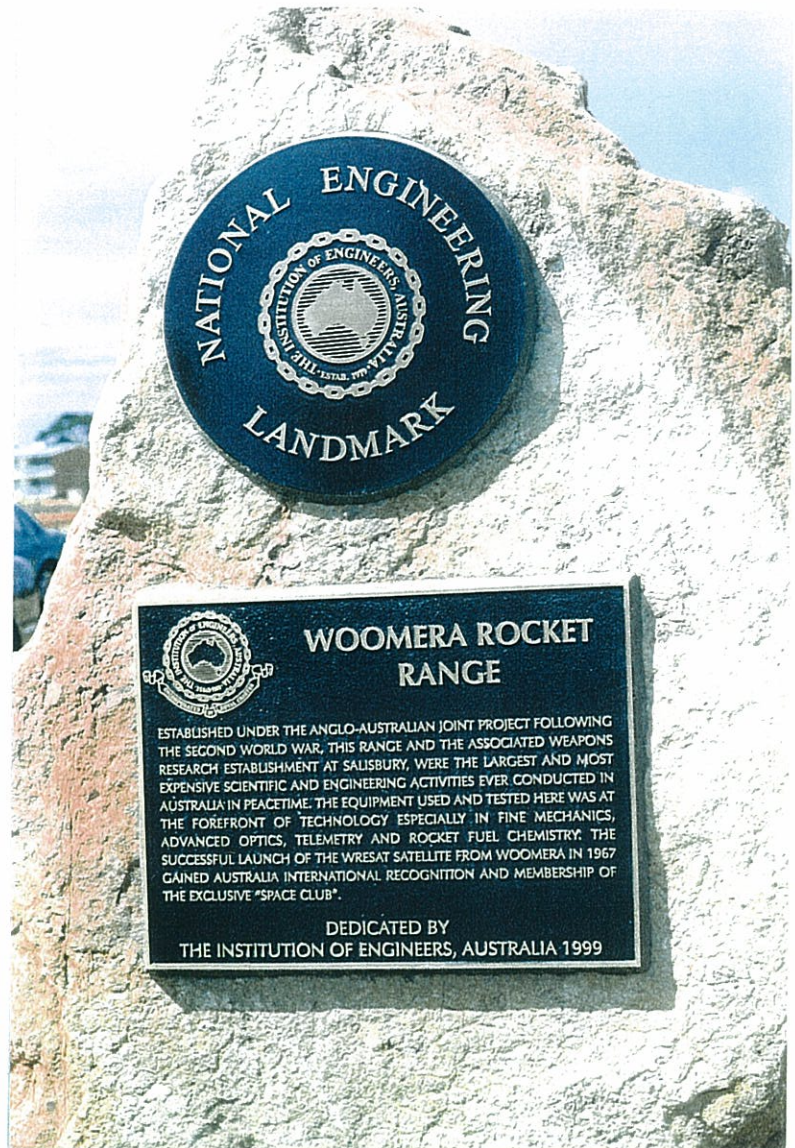


**Deane Kemp and Federal Member for Grey, Barry Wakelin, unveil the National Engineering Landmark plaque.**



**Professor Moody and State Member for Giles, Lyn Breuer, unveil the information plaque.**

The unveiled National Engineering Landmark and information plaques mounted on the rock cairn relocated from the range.



The cairn against the desert landscape.



CANBERRA DIVISION

15 November 1999

Mr Joe van Homelen  
Area Administrator Woomera  
Defence Support Centre Woomera  
Defence Corporate Support  
PO Box 157  
WOOMERA SA 5720

Dear Joe,

**Woomera Rocket Range - a  
National Engineering Landmark**

Thank you for participating in the ceremony to unveil the plaques denoting the Woomera Rocket Range as a National Engineering Landmark, on Saturday 2 October. The event was a great success and was made possible by the total support of yourself and the Woomera Board.

In particular I would like to express my deep appreciation of the willing assistance provided by:

Lil Andrew	general coordination, publicity through the <b>Gibber Gabber</b> and photographic coverage;
Kim Edwards	plaque mounting and site preparation;
Dave Philis	general support and advice;
Peter the PA man	for providing a reliable system, with great humour;
Wally the truck driver	for lumping the chairs, rostrum and lectern to the site and taking them away afterwards.

Please pass my sincere thanks to these people and any other persons who contributed to the success of the day.

I enclose a copy of the November issue of **Engineers Australia** which contains an article on Page 19 on the unveiling ceremony. With respect to the statement in the third last paragraph "involved hundreds of thousands of people", I actually said "involved thousands of people". See also Page 22 for an article on the Kistler Space Endeavour Competition.

Yours sincerely,

**Robert Breen**

**SUGGESTED ENTRY IN THE BOOKLET  
THE HISTORIC ENGINEERING PLAQUES OF AUSTRALIA**

**Woomera Rocket Range**

location: Woomera Village - 10 kms off the Stuart Highway 500 kms north of Adelaide, South Australia. The centre line of the range which is 320 kms wide, commences at the village (rangehead) and proceeds north-west (306 degrees True) for about 1850 kms to Talgarno on the Western Australian coast between Pert Hedland and Broome.

owner: Department of Defence, Commonwealth of Australia.

---

the plaque

type: National Engineering Landmark

location: on a rock cairn at the entrance to Woomera Village.

---

The Woomera Rocket Range was established under the Anglo-Australian Joint Project following the Second World War. It and the associated Weapons Research Establishment at Salisbury in South Australia, were the largest and most expensive scientific and engineering activity ever conducted in Australia in peacetime. It was to South Australia what the Snowy Mountains Scheme was to New South Wales and Victoria. While participating in the programs conducted at Woomera, Australia was amongst the most scientifically and technologically advanced nations in the world.

plaque text:

**Woomera Rocket Range**

Established under the Anglo-Australian Joint Project following the Second World War, this range and the associated Weapons Research Establishment at Salisbury, were the largest and most expensive scientific and engineering activities ever undertaken in Australia in peacetime. The equipment used and tested here was at the forefront of technology especially in fine mechanics, advanced optics, telemetry and rocket fuel chemistry. The successful launch of the WRESAT satellite from Woomera in 1967 gained Australia international recognition and membership of the exclusive "space club".

Dedicated by the Institution of Engineers, Australia 1999.